

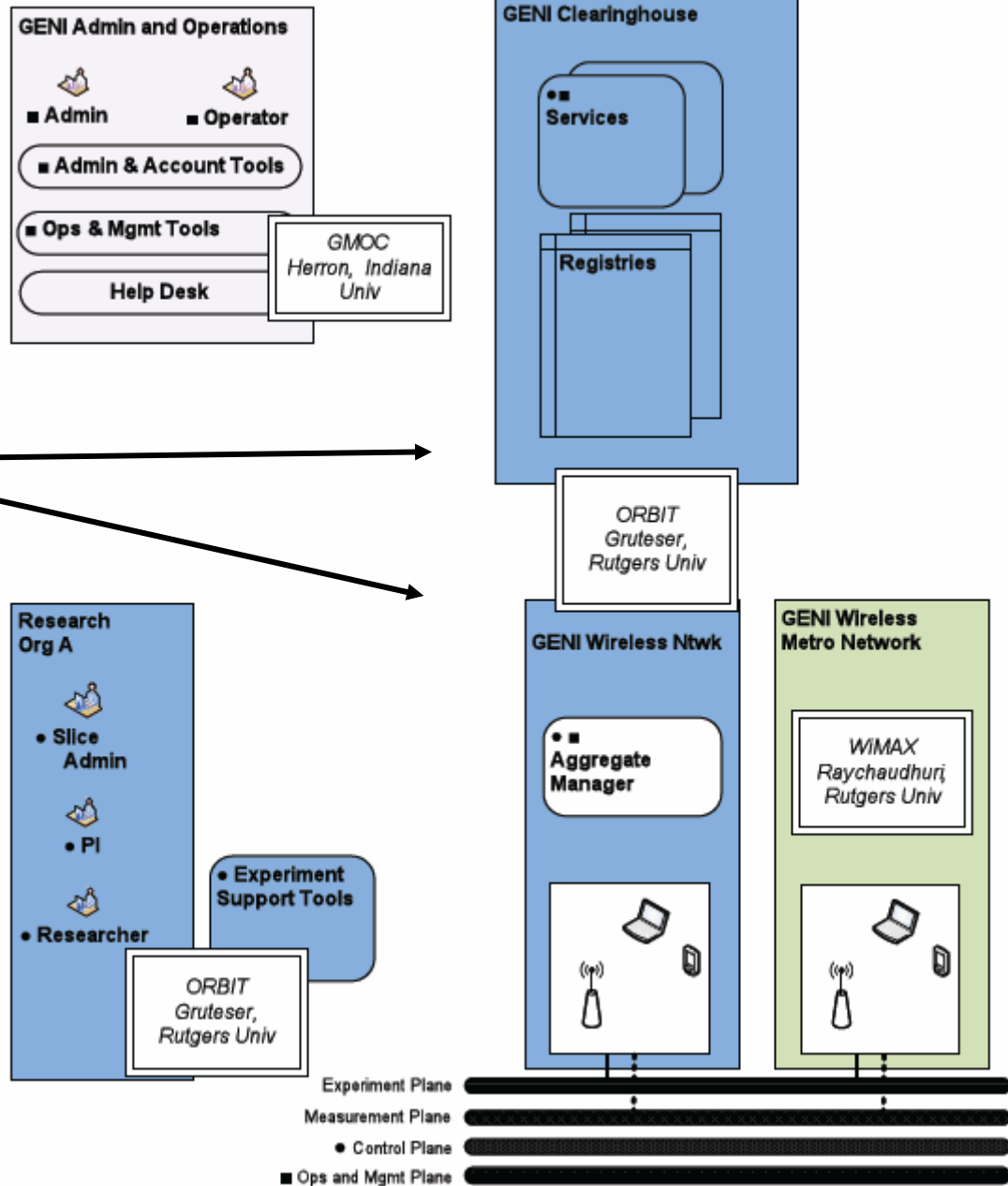
# **Control, Measurement and Resource Management Framework for Heterogeneous and Mobile Wireless Testbeds**

**Marco Gruteser  
Ivan Seskar  
WINLAB**

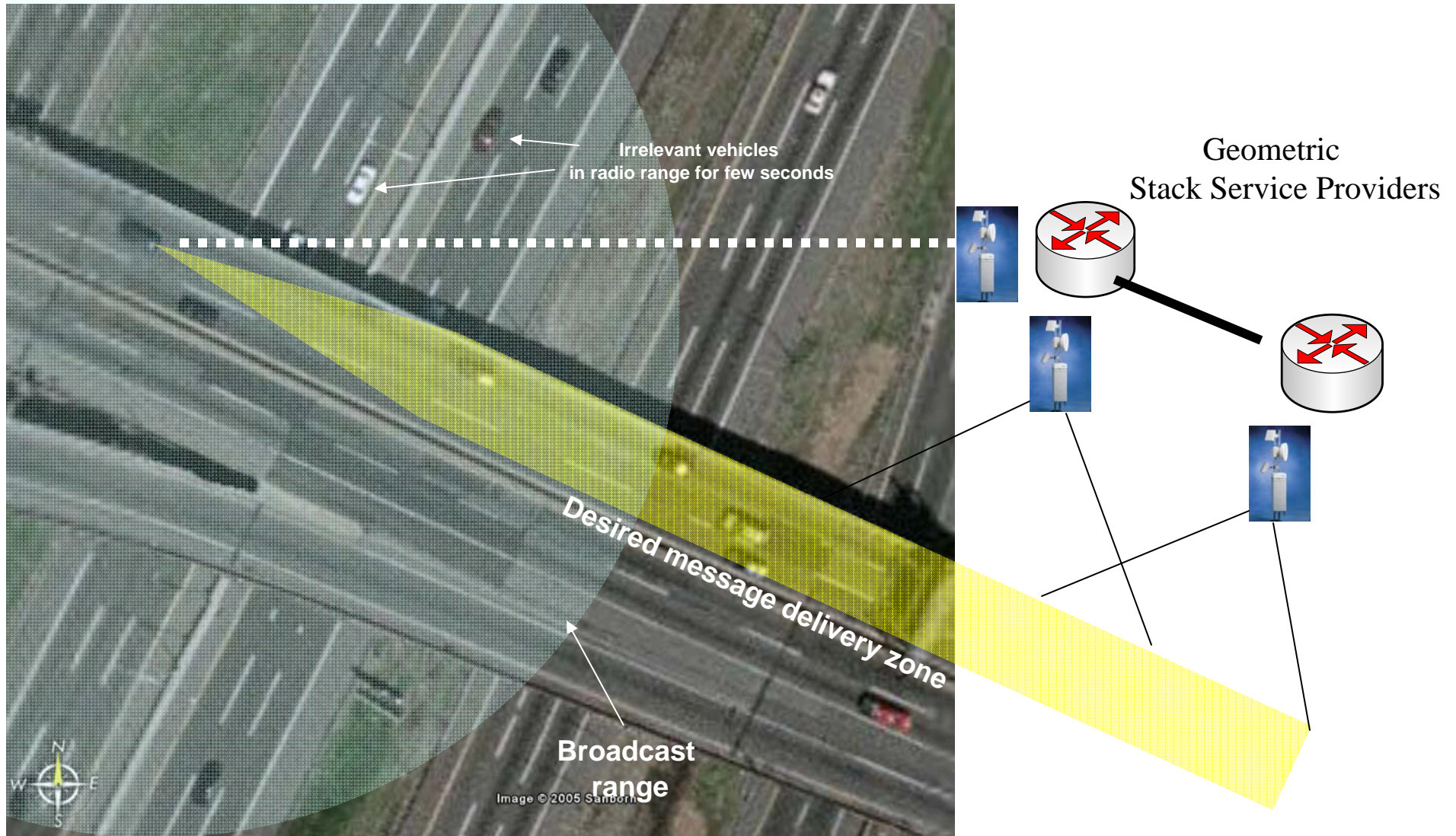
**Max Ott  
Thierry Rakotoarivelo  
NICTA**

## “Our Cluster”

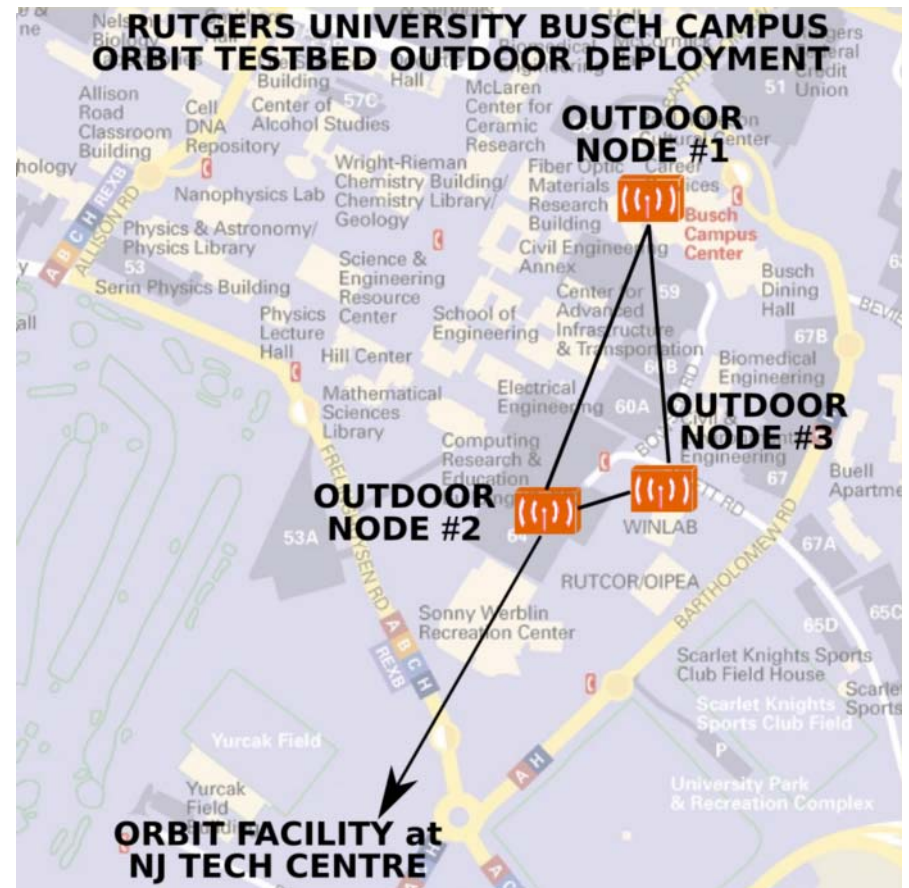
OMF



# Motivational Experiment: Geocasting for Vehicular Applications

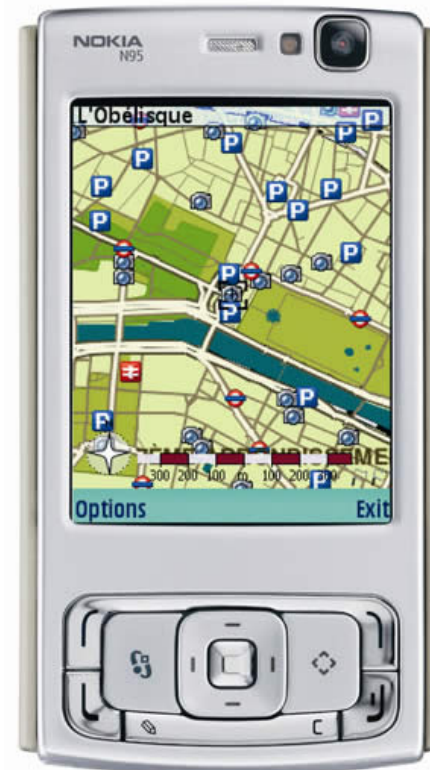
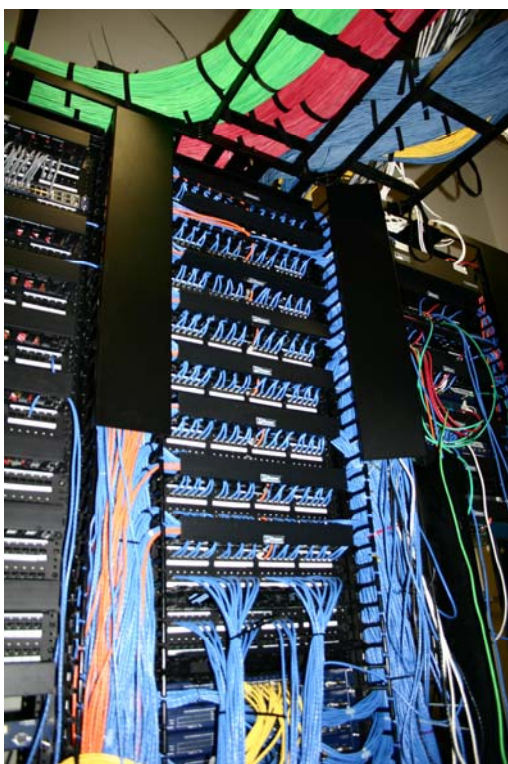


# From Ad hoc Experiments to a Testbed with Uncontrolled Mobility



## Goal

Support **reproducible** experiments across wired, wireless, and mobile testbeds



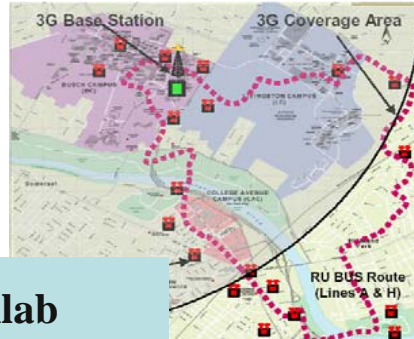
# RBIT Management Framework



# Where is OMF currently used ?



**Orbit, Winlab  
Rutgers University, USA**



**Thomson Lab,  
Paris, France  
(under deployment)**



**PlanetLab,  
(early deployment)**

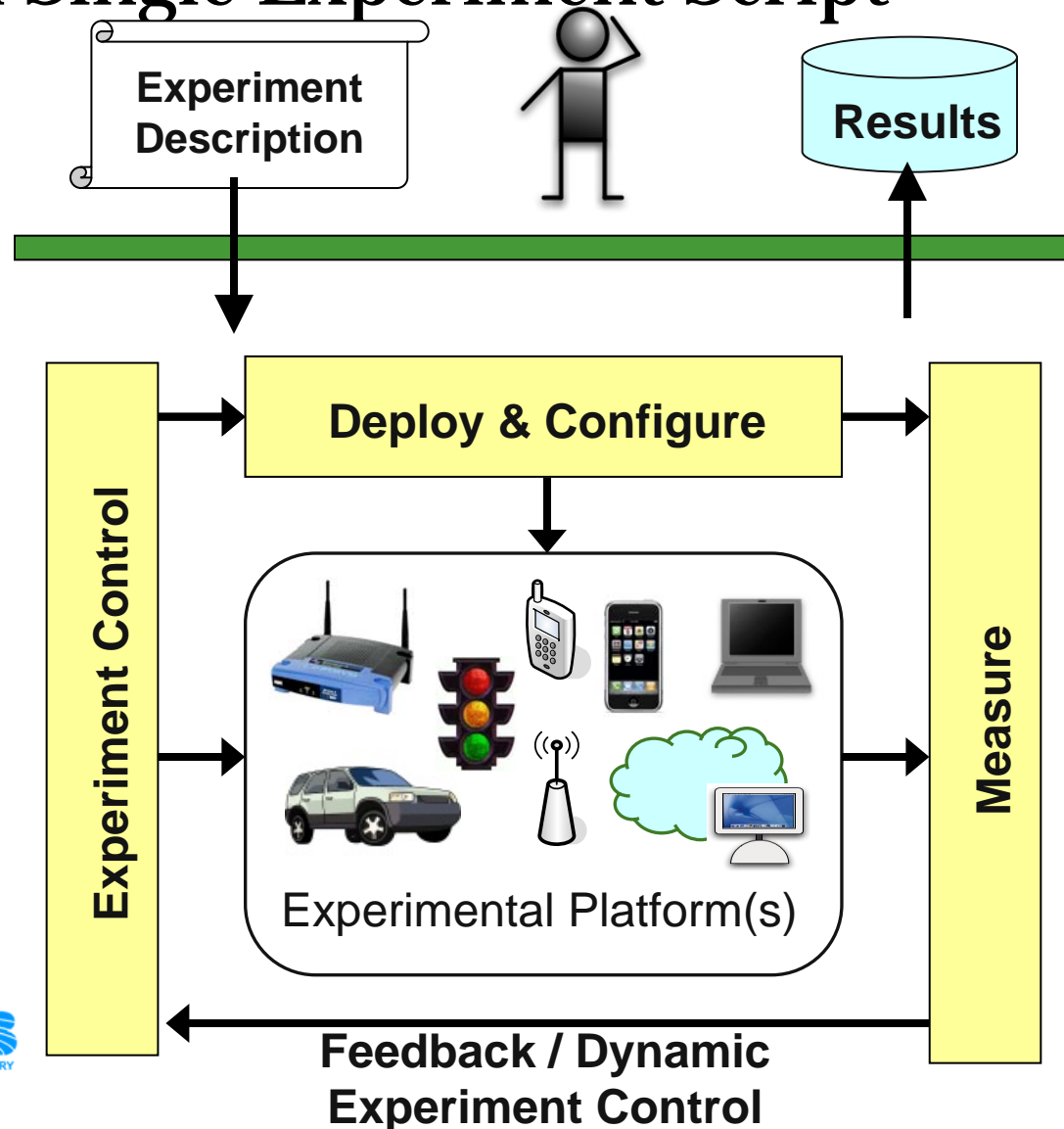


**Center for Research and Technology,  
Greece, (under deployment)**

**NICTA  
Sydney, Australia**

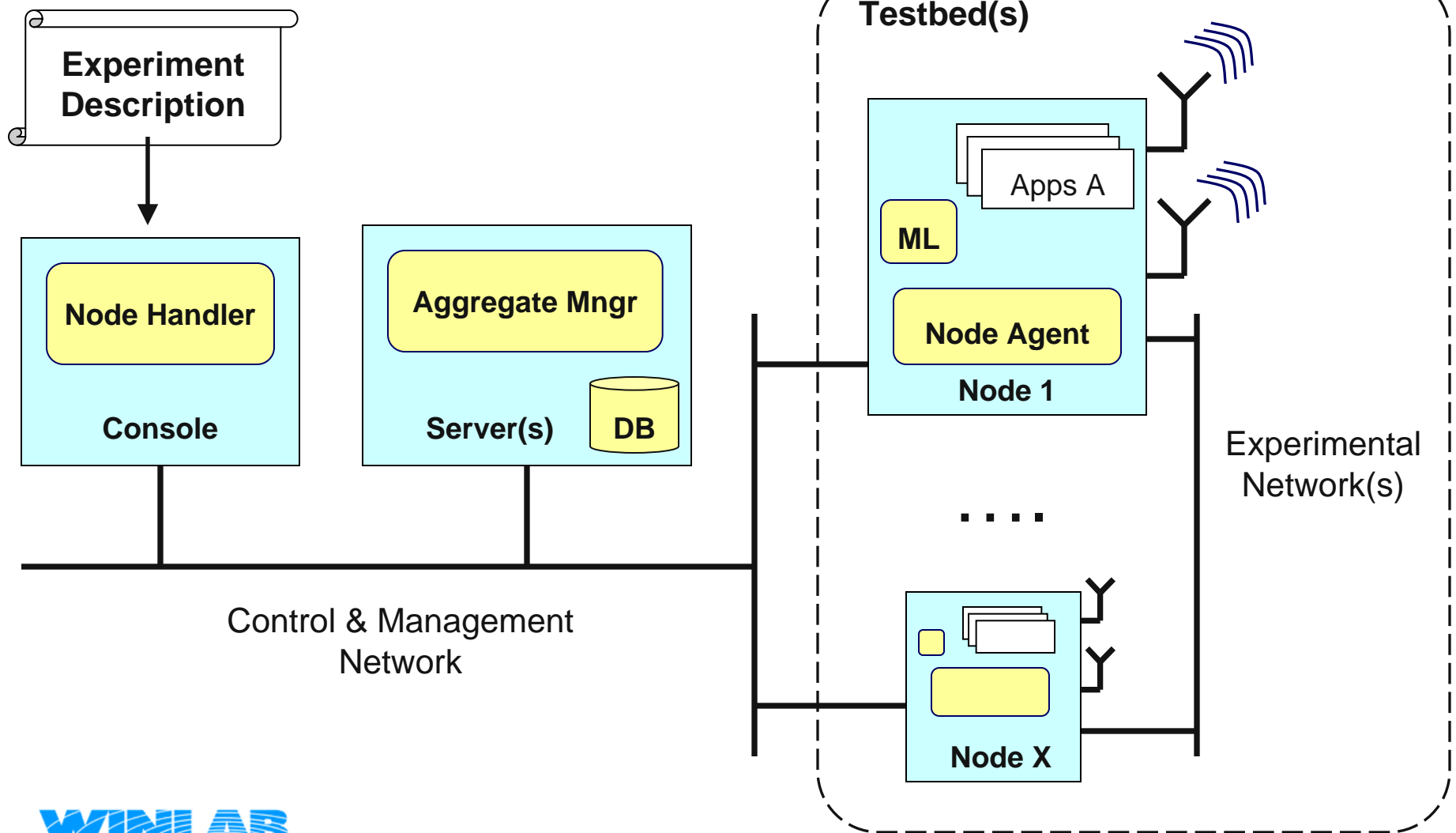


# OMF User View: Enhanced Reproducibility through Single Experiment Script





# OMF - Operator View



## Building on this Existing OMF Framework to Support Federation and Mobility

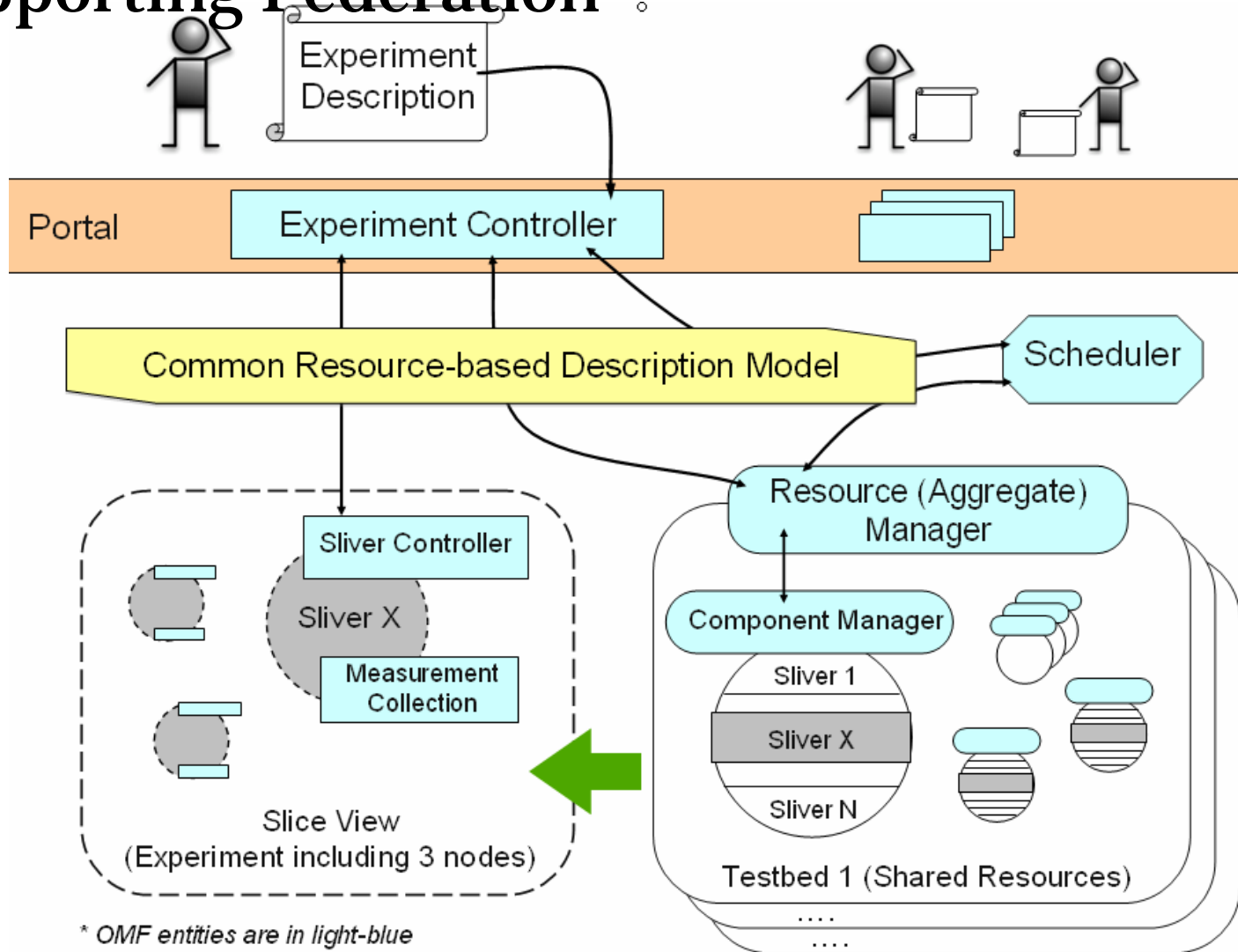
### Currently Supports

- Full “*experiment cycles*”
- Enhanced reproducibility
- Ease operation and maintenance tasks
- Optimize resource utilization inside / across testbeds

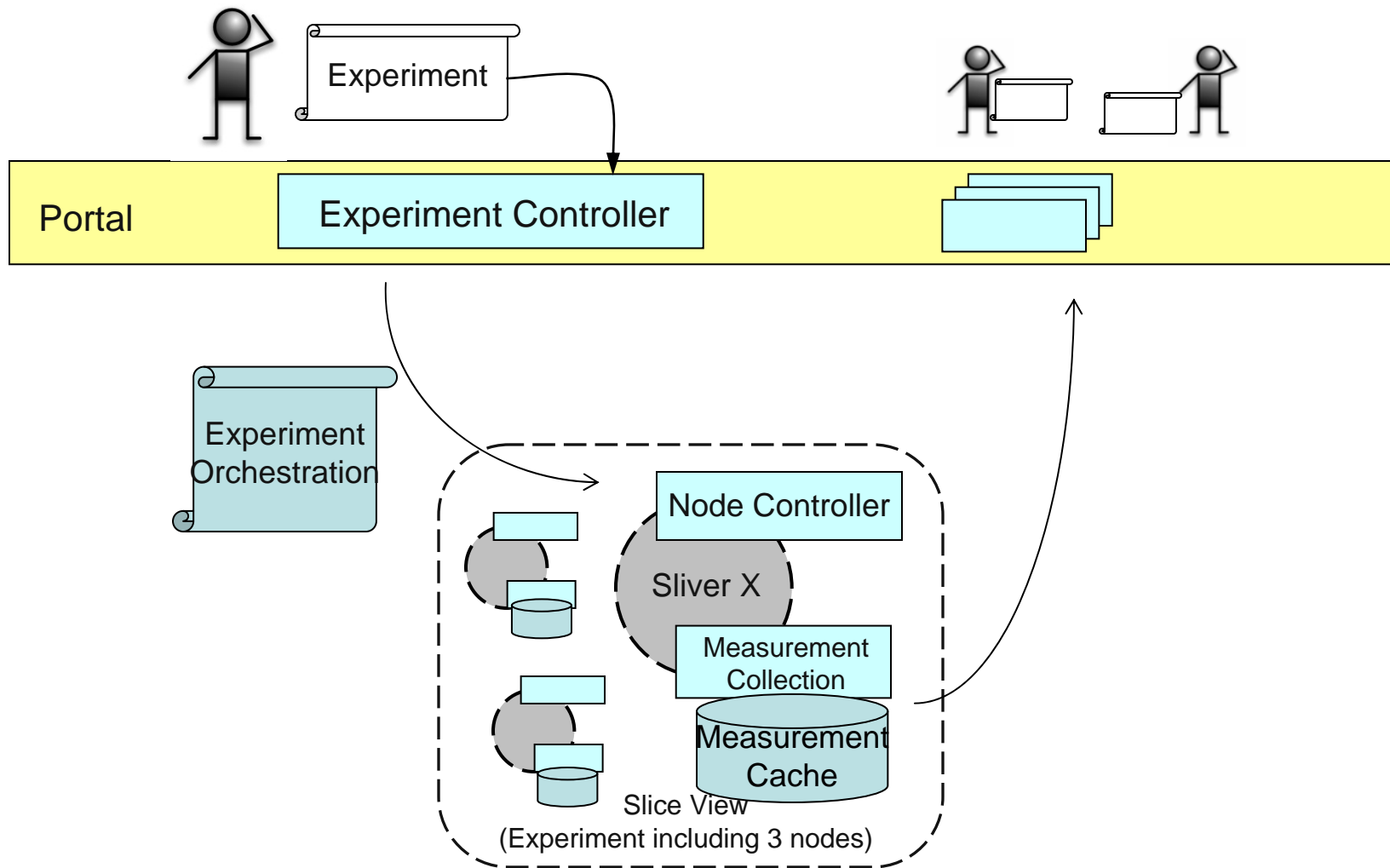
### Project Tasks

- Supporting federation of testbeds
- Disconnection tolerance
- Spatiotemporal orchestration tools
- VLAN connection from ORBIT to NLR

# Supporting Federation

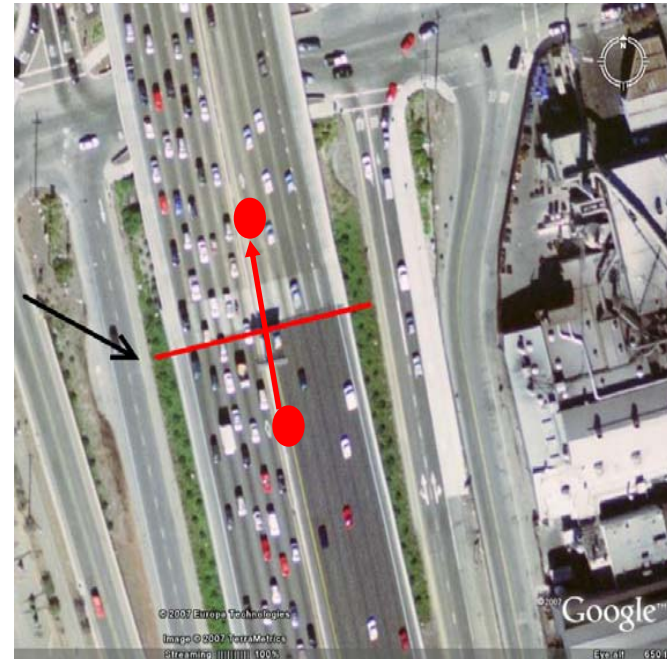


# Disconnection Tolerance



# Controlling Mobile Experiments with Spatial and Temporal Triggers

Spatial Trigger



Executed command when  
 Node passes spatial trigger  
 15s after experiment start  
 5 nodes are within  $\frac{1}{2}$  mile radius  
 Implemented through feedback loop

## 12mo Milestones

- Build on existing Framework that Supports Full Experiment Cycle
  - Currently deployed on 4 testbeds: Australia, USA, Europe
  - Currently partner in two EU 7<sup>th</sup>FP projects: OneLab2 and NADA
- Support experiments across multiple heterogeneous testbeds
  - Support GENI experiments on ORBIT with VLAN connection to NLR
- Mobility Support
  - Disconnection-tolerant experiments
  - Time-based orchestrations

The image features a solid red background. In the top left corner, the word "RUTGERS" is written in a white, serif font. Below it, the words "THE STATE UNIVERSITY OF NEW JERSEY" are written in a smaller, white, sans-serif font. A large, faint watermark of the Rutgers University seal is visible in the background, centered behind the text. The seal is circular and contains a sunburst design in the center, with the words "RUTGERS" and "THE STATE UNIVERSITY OF NEW JERSEY" around the perimeter.

RUTGERS

THE STATE UNIVERSITY  
OF NEW JERSEY

Thank you