

# Experiences in the Wisconsin Advanced Internet Laboratory

Joel Sommers  
Colgate University  
[jsommers@colgate.edu](mailto:jsommers@colgate.edu)

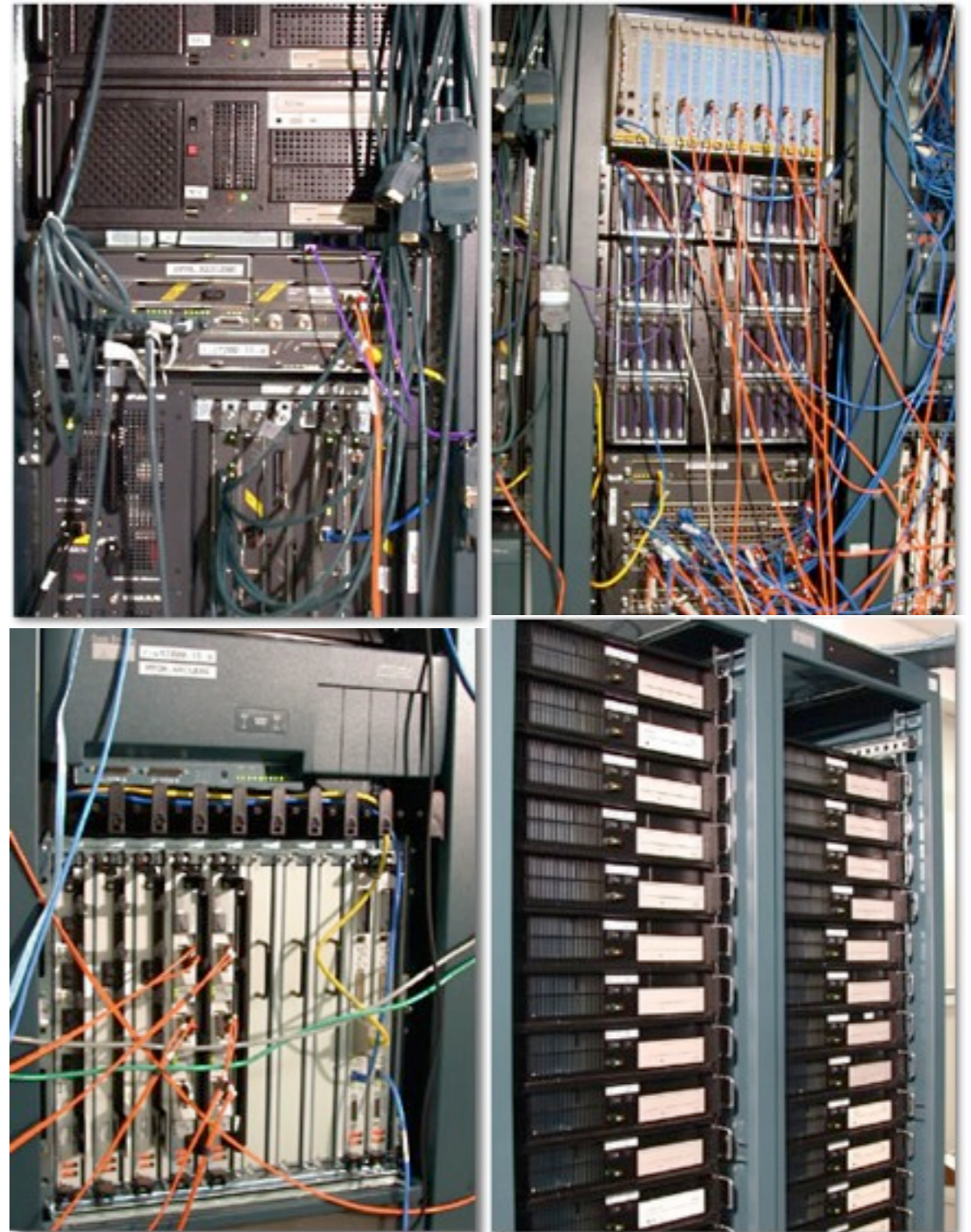


# WAIL Overview

- WAIL: Wisconsin Advanced Internet Lab
  - Large-scale networking lab
  - Used by many Wisconsin students for research & coursework
- Accessible to external users through Schooner
  - <http://www.schooner.wail.wisc.edu/>
  - Based on Emulab system
  - Some extensions to support adding/configuring routers and other equipment

# Lab Infrastructure

- ~400 workstations
- A variety of Cisco routers
  - Several GSRs, 6500s, 7300s, ~30 total
- Some specialized measurement hardware
  - DAG boards, optical splitters



# Common issues and questions (I)

- Most questions come from main user base: students
  - Most users are internal (Wisconsin) students
    - Both grad students and undergrads, for research and coursework
    - Some external users, but many fewer
  - How to configure routers?
    - E.g., set up MPLS tunnels, configure dynamic routing, etc.
    - Many users do not have experience with Cisco command line

# Common issues and questions (2)

- How to configure ... anything
  - Some need help with general OS configuration, installing software, setting up software to run experiments
  - Generally pretty easy to resolve
- General response: ask what the goal is and suggest an approach (and documentation)
  - Depending on experiment setup, these can be harder to resolve
  - Hard to learn Cisco command line and configure useful services
    - But a clear game plan helps (& pointers to relevant documentation)

# Lessons

- A library of (annotated) configuration recipes helps for most cases
  - E.g., MPLS setups, OSPF and BGP setups, etc.
- Detailed tutorial(s) also help
  - Especially for router configuration
- More “exotic” experiments need case-by-case assistance

**Questions?**