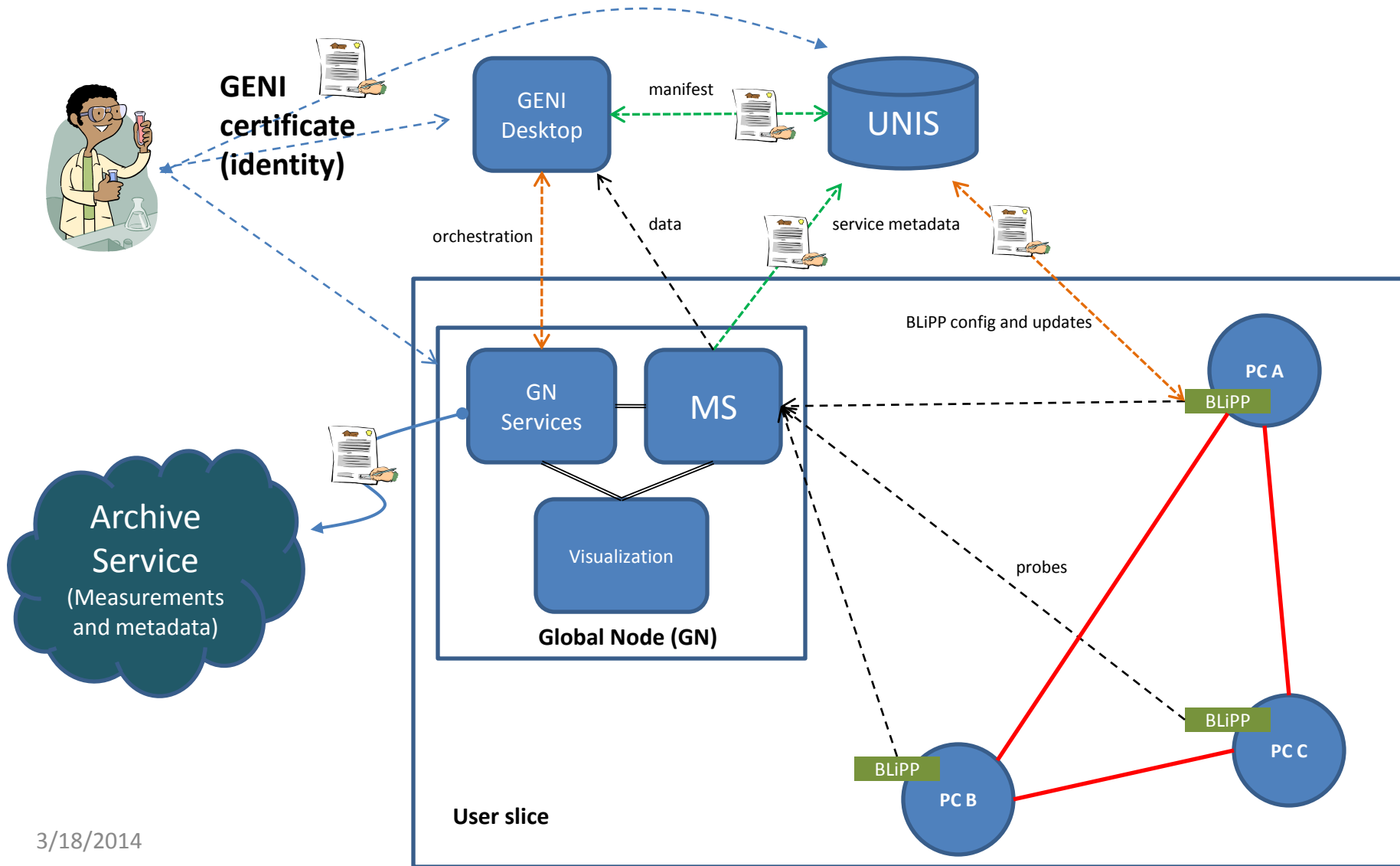


Measurement components


- Unified Network Information Service (UNIS)
 - Topology and service information plus measurement metadata
 - RESTful implementation, built-in AuthN/AuthZ
- Measurement Store (MS)
 - Stores timestamp-value pairs, validates metadata
 - Configurable data collections
- Measurement collectors
 - Basic Lightweight Periscope Probes (BLiPP)
 - Active and passive measurements
 - Interacts with UNIS and MS
- Configuration and visualization
 - Web-frontends (GUIs), CLIs, etc.
 - Config updates pushed to UNIS, pulled by collectors

GEMINI measurement architecture



Web-GUI

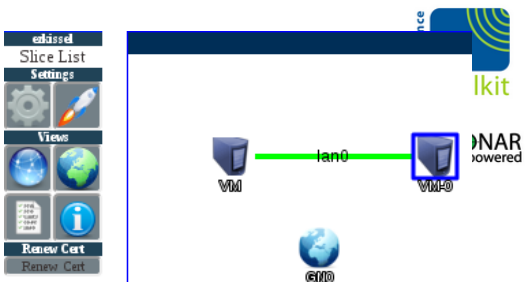
Browser address bar: https://pcvm2-15.genirack.nyu.edu/psconfig/admin/blipp_testing/#



- Slice Configuration**
- Configuration Status
- Manage BLiPP
- Schedule BLiPP Test

- Other**
- Configuration Help
- Frequently Asked Questions
- About
- Credits

Derived from:



Open Live View

Open PS Config

Scheduled Tests Configuration Tool

Node: VM

Scheduled Tests

PIING	ping to VM-0	Modify	Remove	ps.tools:blipp:linux:net:ping:rtt	Graph
-------	--------------	------------------------	------------------------	-----------------------------------	-----------------------

[Add Throughput Test](#)
[Add Ping Test](#)
[Add NetLogger Probe](#)

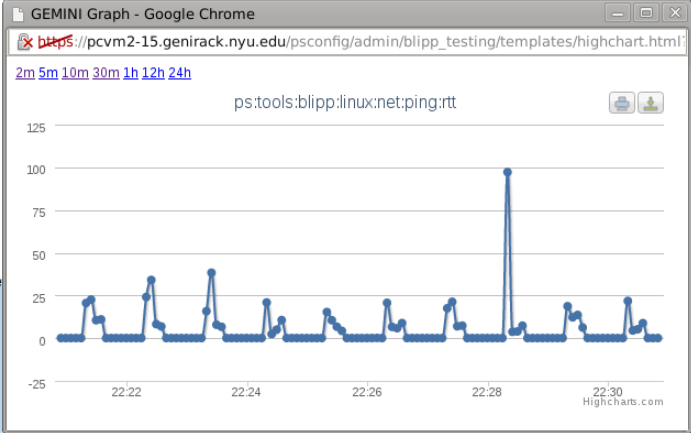
Configuration pulled from UNIS.

BLiPP Log

Full Log

```

action_size': 1000000,
:03-16T18:57:48.821207Z event-blipp.probe_runner.NODE:
:03-16T18:57:48.821207Z event-blipp.probe_runner.NODE:
:03-16T18:57:48.821207Z event-blipp.probe_runner.NODE:
:03-16T18:57:48.821207Z event-blipp.probe_runner.NODE:
:03-16T18:57:49.580105Z event-blipp.probe_runner.NODE:
:03-16T18:57:49.580105Z event-blipp.probe_runner.NODE:
action_schedule': u'builtins.simple',
action_size': 1000000,
action_ttl': 1500000,
cmd': u'ping -c 1 -s 1000 -i 1 10.10.1.2',
:Types': (u'rtt': u'ps:tools:blipp:linux:net:ping:rtt',
: u'ttl': u'ps:tools:blipp:linux:net:ping:tll'},
url': u'https://pcvm2-15.genirack.nyu.edu:8888',
: u'ping to VM-0',
rt_count': 1,
rt_interval': 1,
rt_size': 1000,
module': u'cmd_line_probe',
: u'ttl=(?P\d+).*time=(?P\d+\.\.\d+\.\d+)',
ting_params': {u'every': 5},
is': u'ON' name="ping to VM-0" module=cmd_line_probe
:03-16T18:57:49.580105Z event-blipp.probe_runner.NODE: VM.ezragememo.ch-geni-net.genirack.nyu.edu level=Warn config="{u'address': u'10.10.1.2',
action_size': 1000000,
action_ttl': 1500000,
cmd': u'ping -c 1 -s 1000 -i 1 10.10.1.2',
:Types': (u'rtt': u'ps:tools:blipp:linux:net:ping:rtt',
: u'ttl': u'ps:tools:blipp:linux:net:ping:tll'},
url': u'https://pcvm2-15.genirack.nyu.edu:8888',
: u'ping to VM-0',
rt_count': 1,
rt_interval': 1.
                    
```



ps.tools:blipp:linux:net:ping:rtt

BLiPP measurement scheduling

- HELM is at the “helm”: controlling the distributed BLiPP services to run measurements without contention
- HELM discovers all BLiPP services
- BLiPP services run setup probes to find shared resources
 - Provides input into the HELM controller
- A schedule of measurements is advertised to BLiPP that meets the desired goal
 - “full mesh” tests working now
 - Node collections, deterministic time slot scheduling in the works

