

The GENI Desktop

A Framework for Accessing and Using GENI

Jim Griffioen

Laboratory for Advanced Networking

University of Kentucky

Lexington, KY

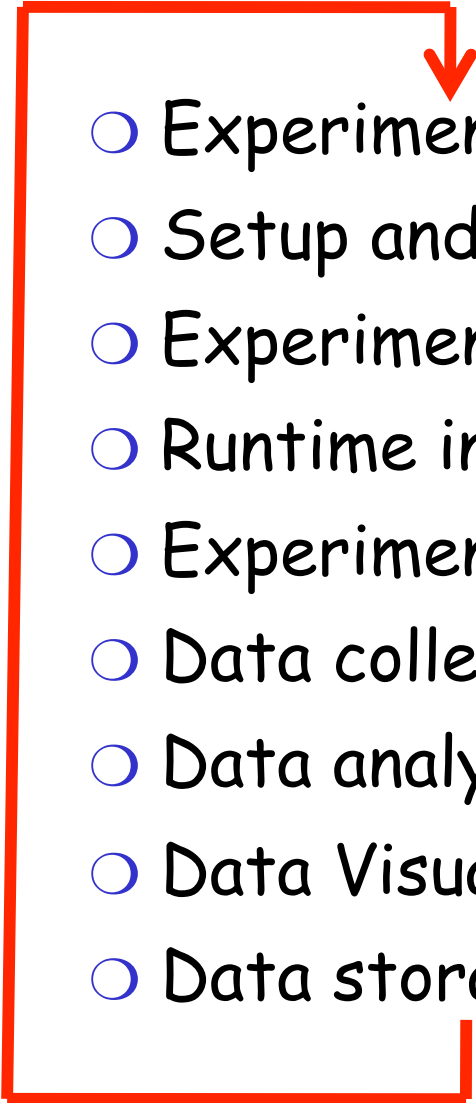
The Challenge

- **The Problem:** The experiment lifecycle is currently fragmented.
 - Many different tools are needed in order to work with various parts of the GENI system.
 - Some aspects of the lifecycle have no (or very limited) tools available.
- **The need:** A unified framework and interface for accessing, controlling, and interacting with GENI experiments throughout the lifecycle of an experiment.

Lifecycle of an Experiment

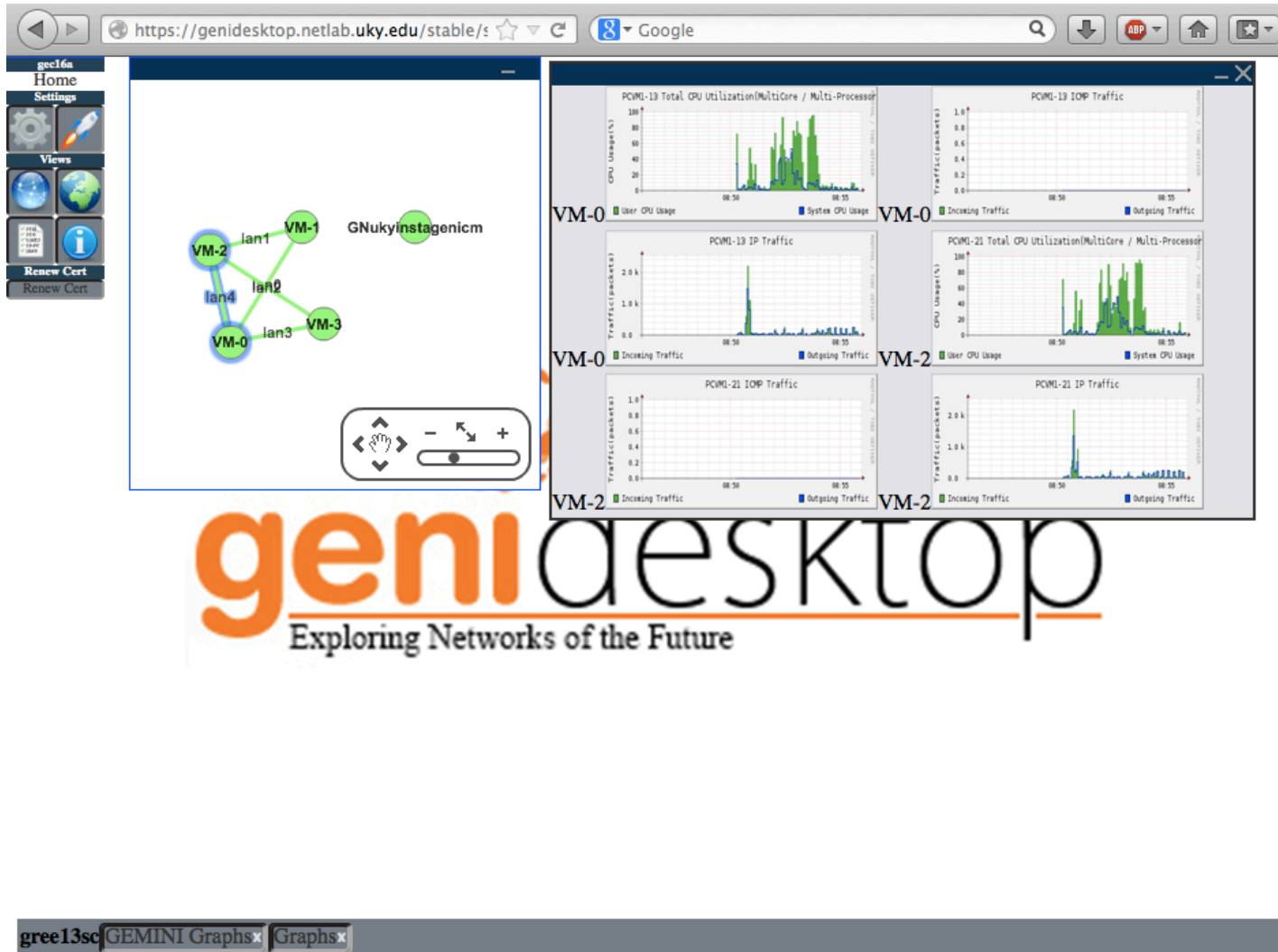
- Experiment design,
- Setup and deployment,
- Experiment control
- Runtime interaction
- Experiment monitoring,
- Data collection,
- Data analysis
- Data Visualization
- Data storage/archiving

Lifecycle of an Experiment

- 
- Experiment design,
 - Setup and deployment,
 - Experiment control
 - Runtime interaction
 - Experiment monitoring,
 - Data collection,
 - Data analysis
 - Data Visualization
 - Data storage/archiving

The GENI Desktop

(An initial step toward a unified framework)



Enhancing the GENI Desktop

- Design, Setup, and Configuration
 - ▣ Portal, Flack/Jack, Awe/OMNI, Lab Wiki
- Initialization and Validation
 - ▣ Manifest validation
 - ▣ Regression testing
- Execution and Runtime Support
 - ▣ New Modules
 - ▣ Integrating Third-party Tools
 - ▣ Cooperation with other tools
- Archival Storage and Analysis
 - ▣ Meta-data support
- Command Line Interfaces
 - ▣ Scripting integration
 - ▣ Re-executing experiments

Thank You!

Questions?

Portions of this material are based upon work supported in part by the National Science Foundation under grant number CNS-0834243. Any opinions, findings, and conclusions or recommendations expressed in this material are those of the authors and do not necessarily reflect the views of GPO Technologies, Corp, the GENI Project Office, or the National Science Foundation.