



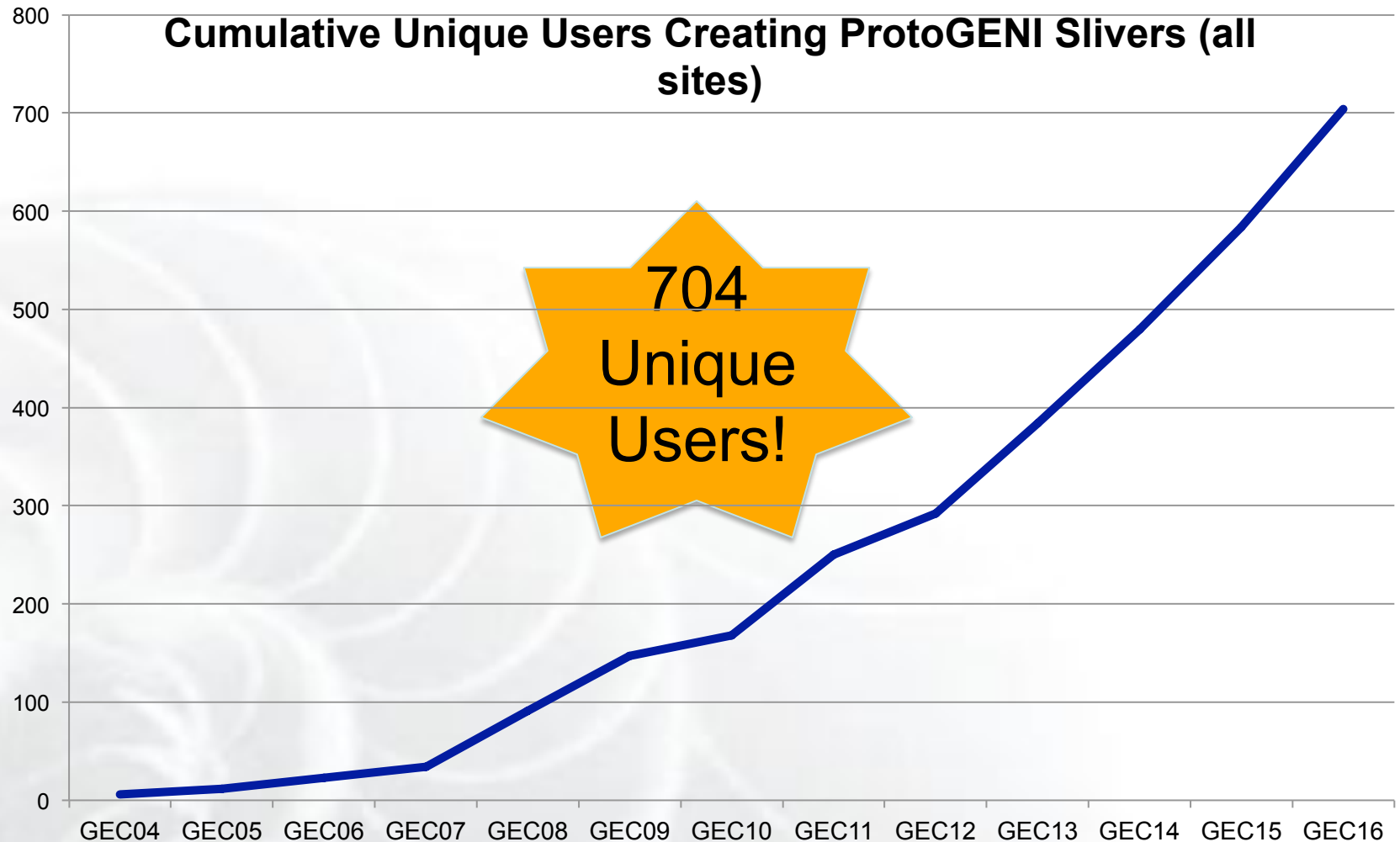
GENI

Experiments Update

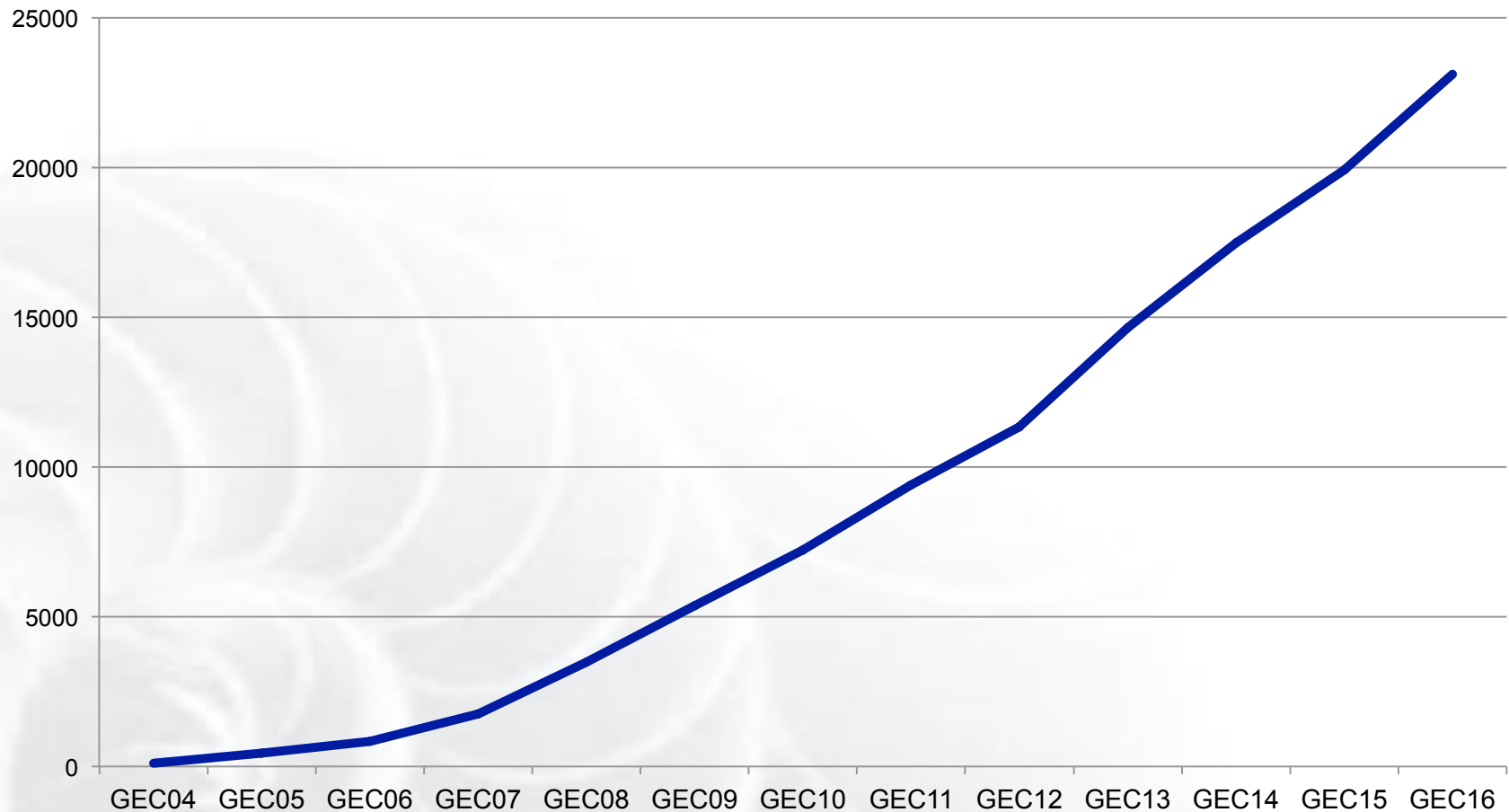
GENI Engineering Conference 16
University of Utah

Vicraj Thomas
March 20, 2013
www.geni.net

Numbers of GENI Experimenters Continues to Grow...



Cumulative ProtoGENI Slivers (all sites)

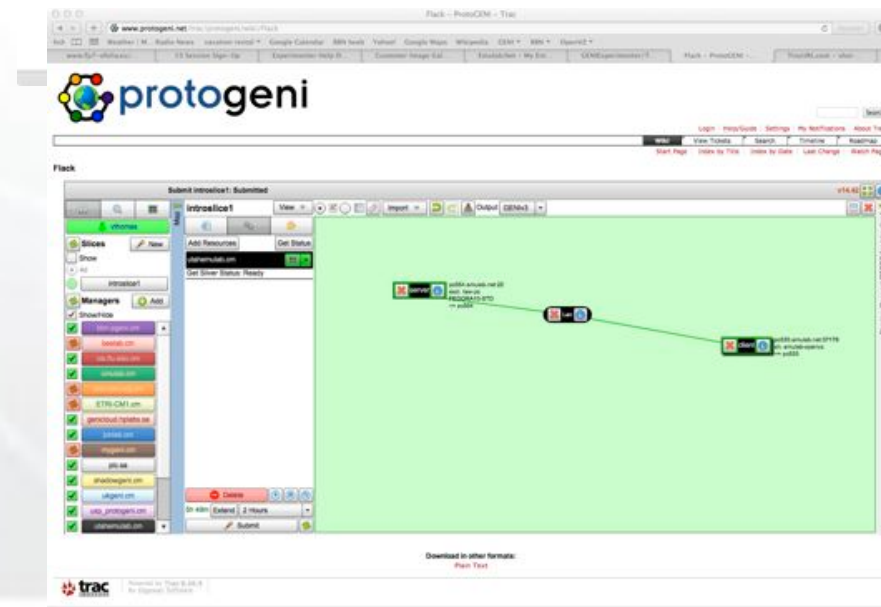
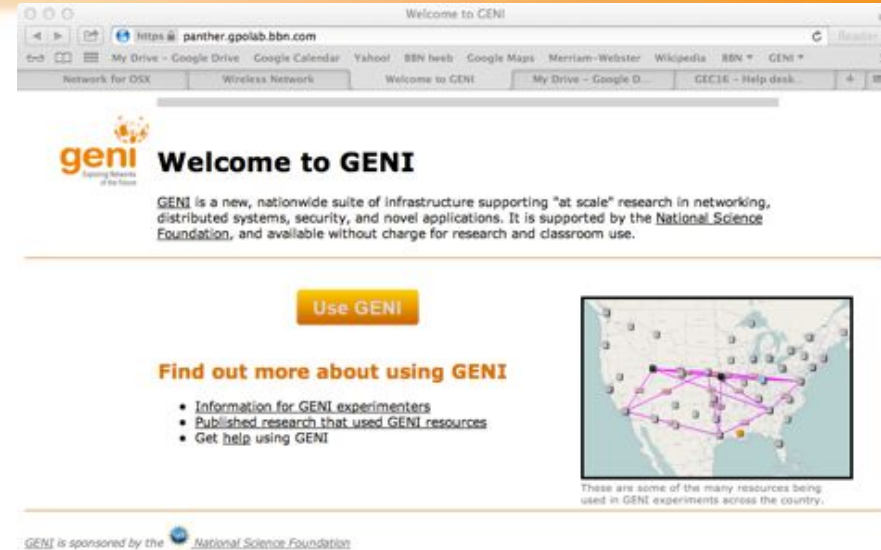


Continued Improvements in the User Experience

- GENI Portal now generally available
 - Makes it easy to do simple things
 - Getting accounts / logging in with home institution login & password
 - Running simple experiments

- Flack
 - New plugin for the GEMINI I&M system
 - Better error handling
 - URLs with error messages for details

- Omni
 - Script that automatically generates config files based on GENI portal issued certificates
 - Tries to switch to the AM API version and RSpec version that requested aggregates understand
 - Script to easily use SSH to execute commands on experimenter hosts



Ramping up Experimenter Training



- 5 days in June 2013, University of Connecticut
- Theme: Using GENI wireless resources
- Goals: Learn & use GENI tools
- Team-based projects; project presentation on last day
- Attendees: Undergrad/grad students, faculty
- Stipend: \$200 + lodging + travel up to \$400
- Application deadline: April 15, 2013
- Register at:
<http://groups.geni.net/geni/wiki/APRAGENI/GREE-SC2013>

- Fall 2012:
 - Zongming Fei (U. of KY)
 - Rudra Dutta (NCSU) (
 - Fraida Fund (NY Poly)
 - Kaiqi Xiong (RIT)
- Spring 2013:
 - Jay Aikat (U. of NC)
 - Rudra Dutta (NCSU)
 - Khaled Harfoush (NCSU)
 - Jelena Marasevic (Columbia U)
 - Parmesh Ramanathan (U. Wisconsin)
- Planned for Fall 2013
 - Christos Papadopoulos (Colorado State),
 - Zongming Fei (U. of KY)
 - Michael Zink (U. of MA)
 - Zhi-Li Zhang (U. of MN)

BoF Dinner on “GENI in the Classroom” today at 6.30pm

RSVP: Vic Thomas (vthomas@bbn.com) or Niky Riga (nriga@bbn.com)



GENIEducation - GENI: geni - Trac

groups.geni.net/gen/wiki/GENIEducation

My Drive - Google Drive - Google Calendar - Yahoo! - BSN Iweb - Google Maps - Merriam-Webster - Wikipedia - BSN - GENI - vacation rental - OpenVZ - Back

1626 unread - 1626 unread - TurboTax Adva... - The iPad's Inco... - Cart - Apple St... - How to Refund... - BNY Transactio... - GENIEducation...

geni Exploring Networks at the Future

NETWORK SCIENCE AND ENGINEERING

SEARCH

Login Settings Help/Guide About Trac

Wiki Newcomers Experimenters **Instructors** Aggregate Providers Operations Developers Special Four SPG Docs

Index by Title Index by Date Last Change View Tickets New Ticket Search

The Global Environment for Network Innovations – **GENI** – is a suite of **research infrastructure** rapidly taking shape in prototype form across the United States. It is sponsored by the National Science Foundation, with the goal of providing a **laboratory environment for networking and distributed systems research and education**. It is well suited for exploring **networks at scale** thereby promoting innovations in network science, security, services and applications.



Getting Started

GENI is a networked federation of multiple testbeds that form a large-scale distributed testbed that you can use in a classroom or in tutorials to teach students networking and distributed system concepts. If you want to either use GENI in your class, or you would like to do a GENI tutorial you will have to first **create a GENI project** and then **choose the material** you want to present.

Resources for using GENI in the classroom

GENI is a federated virtual laboratory that provides access to multiple different testbeds to GENI experimenters, enabling networking and distributed systems research. These are some useful pointers that will help you navigate through the GENI world. Feel free to email us with any questions you might have at help@geni.net.



Example Assignments



Resources for Instructors



Help using GENI for education

Download in other formats:
[Plain Text](#)

- Get an account at:
 - The Experimenter Help Desk at the GEC
 - The Experimenter Drop-In session
 - Today at 3.30pm
 - The Coding Sprint / Experimenter tutoring session
 - Tomorrow at 2.30pm
 - Email help@geni.net
- Respond to GENI Solicitation 4:
 - “Advanced GENI shakedown experiments, prototype services, and applications”