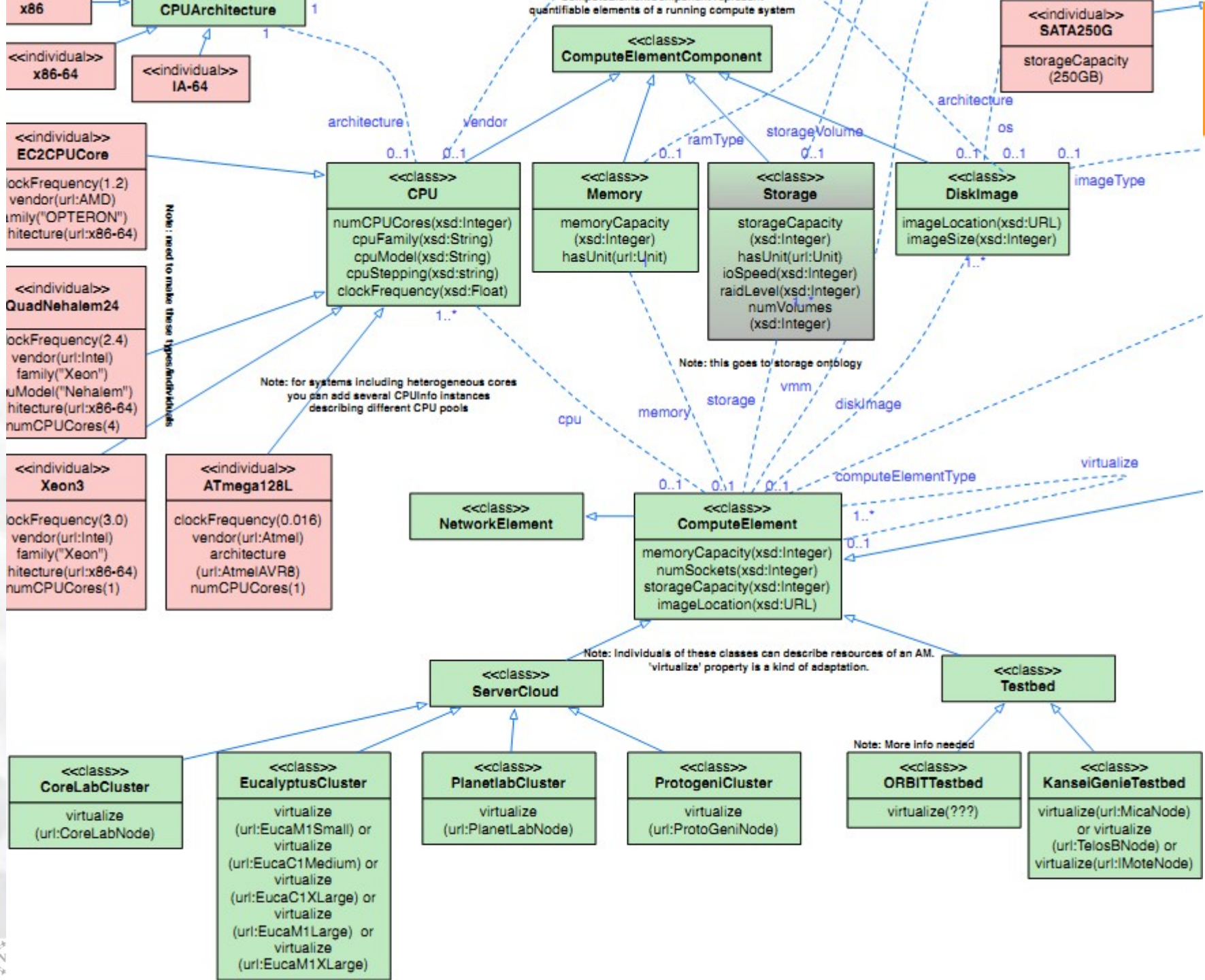


# **RSpecs: Summary and Wrap Up**

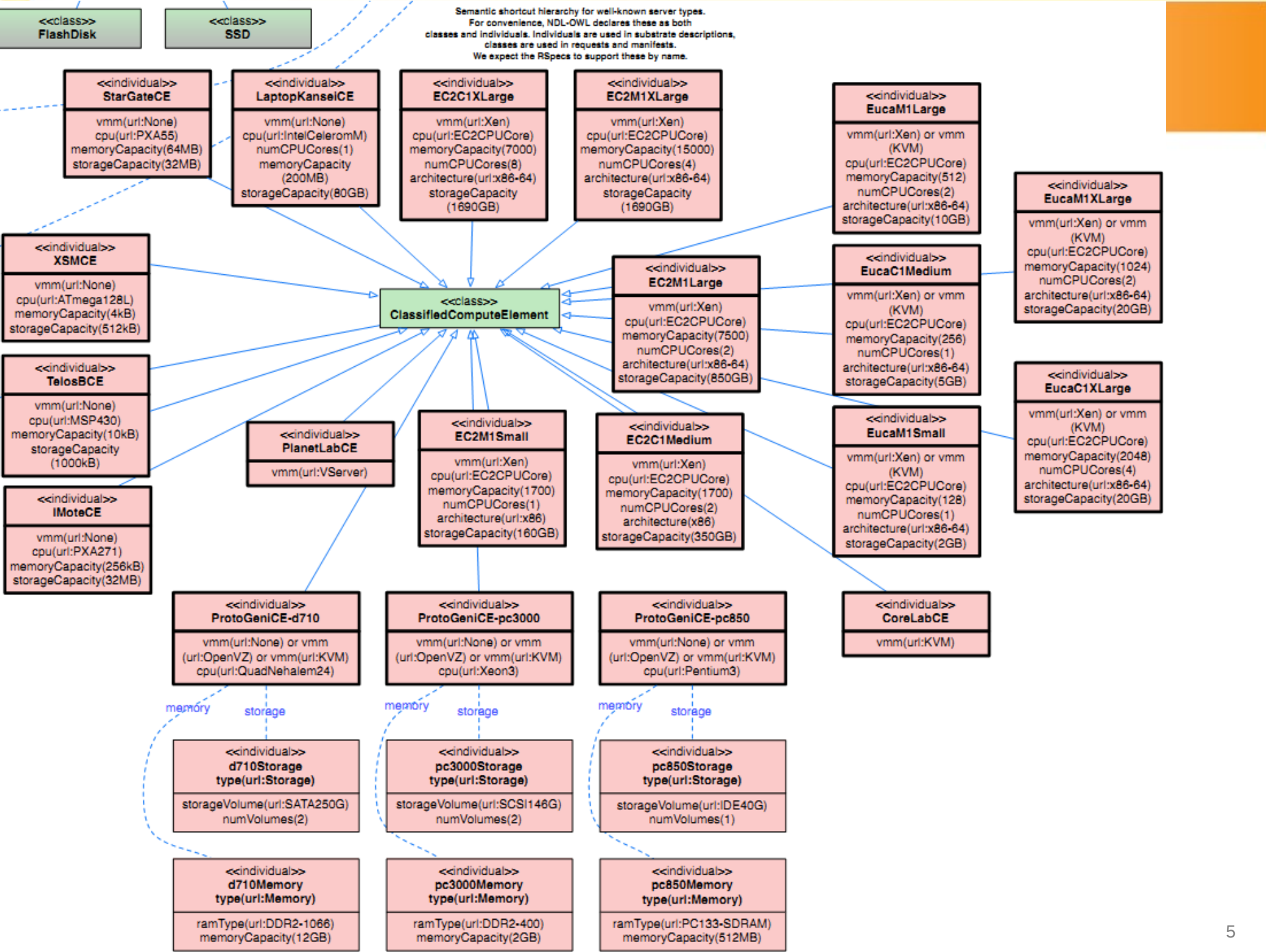
**Aaron Helsing** – [ahelsing@bbn.com](mailto:ahelsing@bbn.com)  
**July 27, 2011**  
**[www.geni.net](http://www.geni.net)**

- Introduction and GENI RSpecs roll-out – Aaron Helsing
- RSpec Converter at Orca – Ilia Baldine
- Network and Compute Ontologies – Ilia Baldine
- Invited Viewpoints on ontologies
  - Max Ott (compute resources, wireless resources, ...)
  - Mike Zink (storage resources)
  - Hongwei Zhang (wireless resources – LENS)
- Discussion: Ontologies
- Conclusion – Aaron Helsing

- Adopt Network Ontology as published at <https://geni-orca.renci.org/trac/wiki/NDL-OWL>
- Adopt? Compute Ontology as published at <http://groups.geni.net/geni/wiki/GEC11RSpec>
- Discuss wireless, storage, other ontologies
- Discuss AM API revisions and GENI RSpec adoption







- Key points made in discussion

- GENI network resources will be modeled with a standard network ontology
- GENI compute resources will be modeled with a standard compute resource ontology
- Other ontologies will be developed

- Evolve Network and Compute Ontologies as needed
- Agree on storage, wireless, other ontologies
- Complete GENI standard RSpec roll-out
  - Coordinate with GPO, ProtoGENI for support
- Adopt AM API revisions