

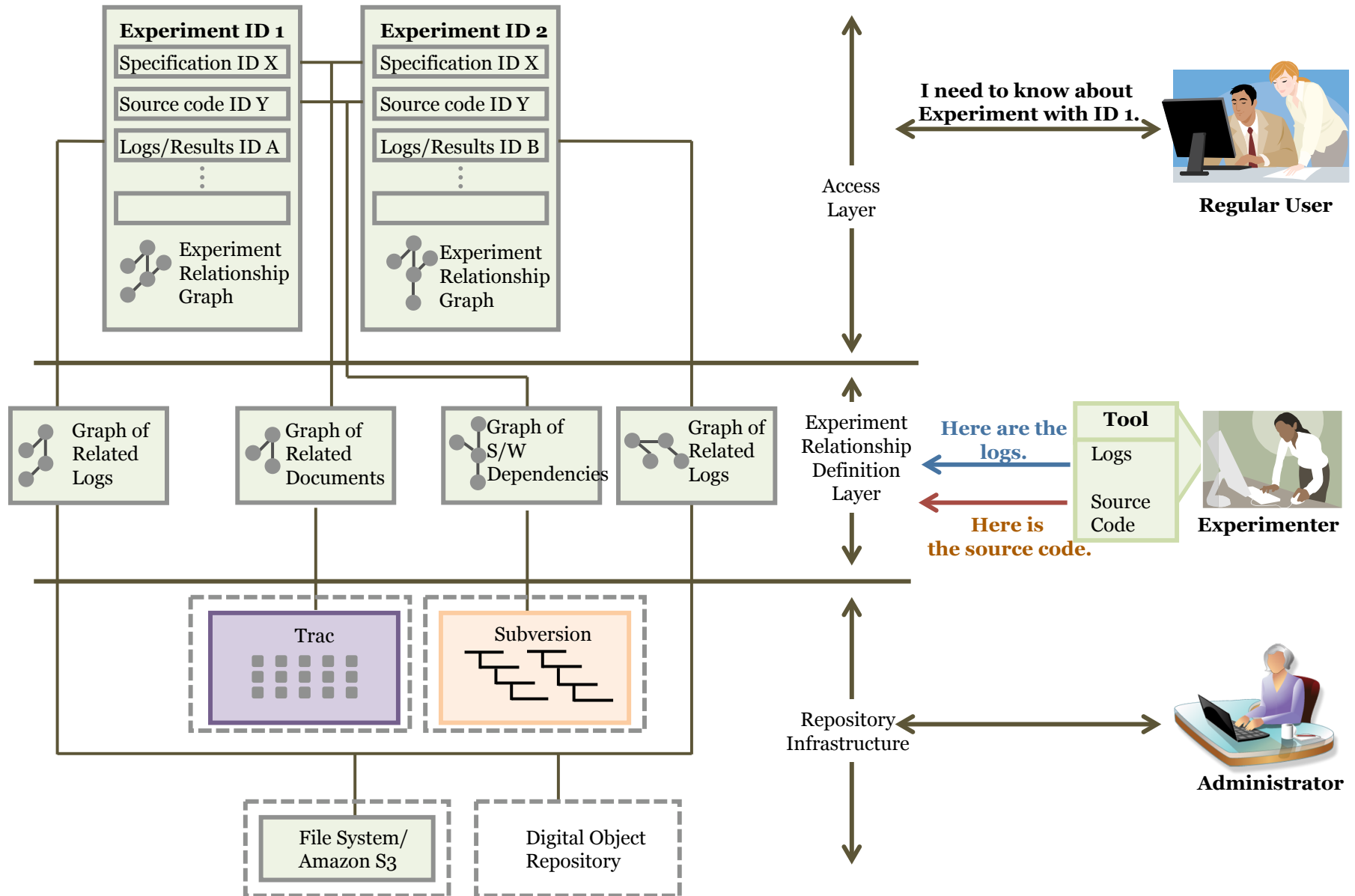
GENI Experiment Management Service (GEMS)

Spiral 2 Effort

Experiment Management

- Experiments have, and result in, various resources which are related to each other (e.g. specs, logs, software, etc.)
- Packaging those resources together (logically) is important while archiving, in order to reuse, repurpose, or reanalyze
 - Those resources, however, exist on multiple platforms and environments
- **Solution: A unified service that establishes the relationship between various resources and that integrates with heterogeneous repositories would meet these requirements**

GENI Experiment Management Service



Spiral 2 Integration Plan

- Host an Experiment Repository for GENI members
 - Done!
- Develop a prototype demonstrating the GEMS capability
 - Done!
- Work with both the Experiment and OMIS working groups to define an interface for the GENI Experiment Management Service, involving experimenters from various clusters