

NetKarma Portal

Chris Small

Portal Goals

- Make it much easier for experimenters to capture provenance data with experiment
- Integrate with:
 - Measurement Data Sources (GEMINI, LAMP, GIMI, etc..)
 - Data Archival services (iRODS)
 - Status and event data (GMOC, ProtoGENI, Planetlab)

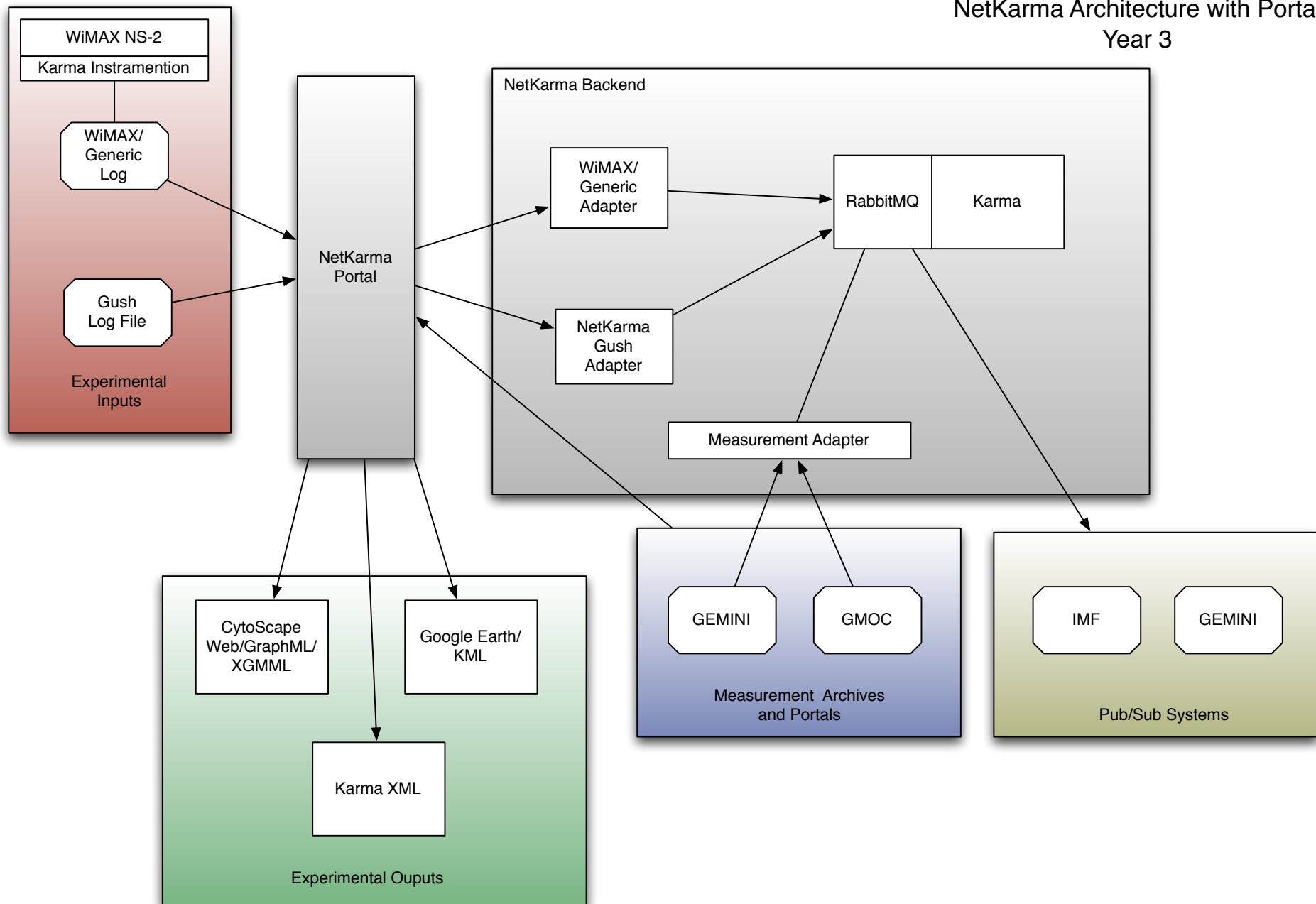
What the Portal provides

- Easy ingestion of data sources
 - Automatic by references in the ingested data
 - Web based ingestion
 - Built into tools
 - Includes structured and unstructured metadata
- Visualization
 - Workflow
 - Resources (and their topology)
 - Data and Metadata
 - “Experiment as a movie”
 - Output for other tools (KML, GraphML, etc..)

What the Portal provides

- Archival services interface
 - Pass-through of information to iRODS and I&M
- Access to Data
 - Karma Workflow graphs (Karma DB, Karma XML)
 - Includes additional Metadata products
 - Searchable archives
- Links to other services
 - I&M
 - GMOC

NetKarma Architecture with Portal Year 3



How the Portal is used

- Experimenter drags and drops files into the NetKarma “data hopper”
- Experimental handle (DOI or ARK) created if not already existing
- Workflow information is extracted from uploaded data
- Visualization of Workflow product
- All data including new metadata products created added to long term archives

[Experiments](#)
[WorkFlows](#)
[Resources](#)
[Data](#)
[Search](#)

File Upload

Experiment Description

Files to upload:

[Choose Files](#) No file chosen

or drop files here

Gush log files and UNIS/NMWG topo file parsing is supported. All others are saved as artifacts.

Status Messages

Experiments

Show 10 entries

Search:

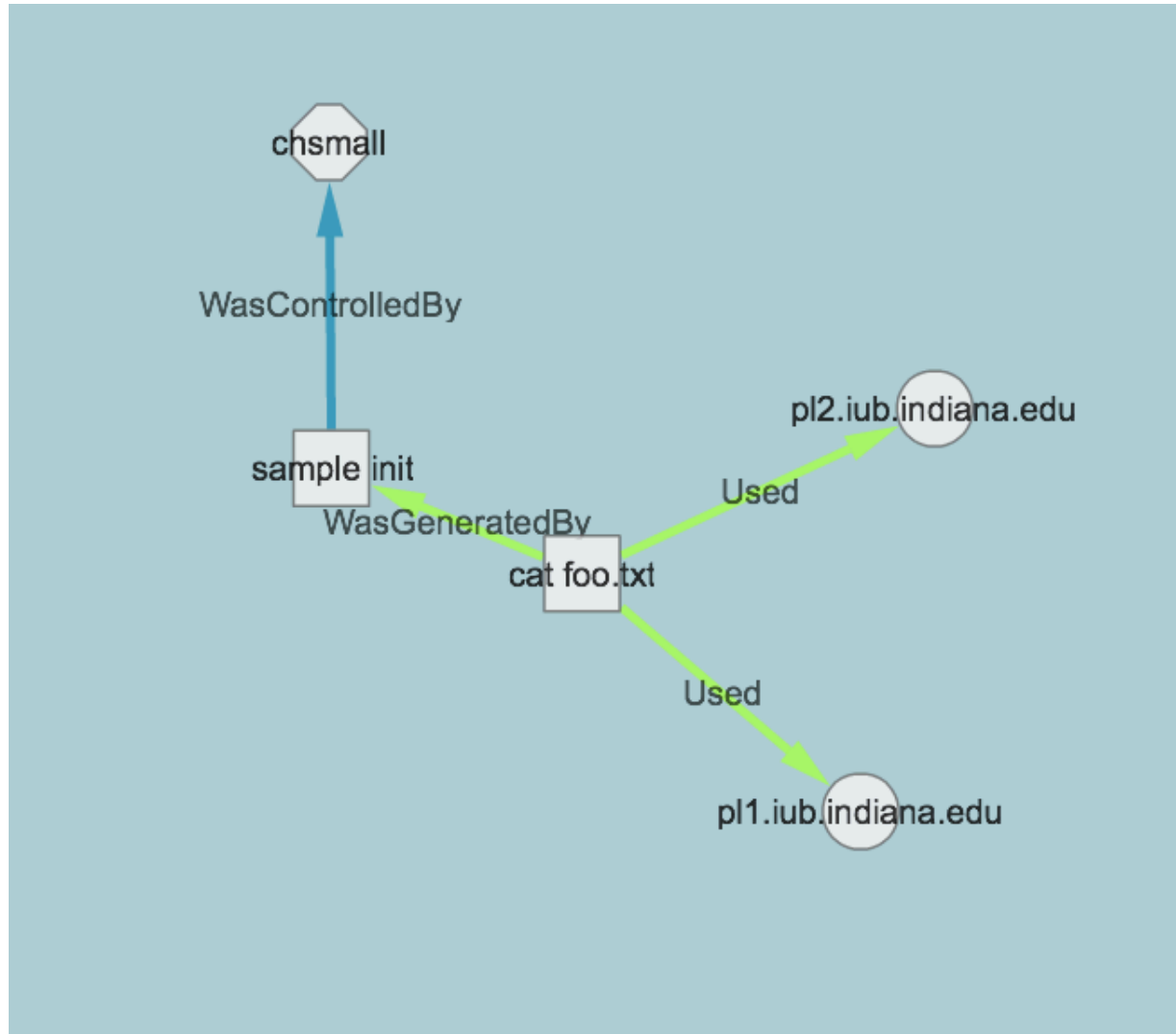
Experiment ID ▲	Description ◇	# of WorkFlows ◇	# of Archives ◇	Creator ◇
ark:/99999/fk4p84mr0	XSP	1	0	chsmall@indiana.edu
ark:/99999/fk4sx6p48	Twister	1	0	chsmall@indiana.edu

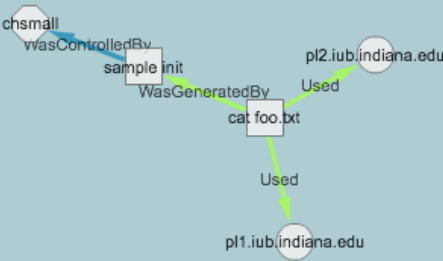
Showing 1 to 2 of 2 entries

[First](#)[Previous](#)[1](#)[Next](#)[Last](#)

Experiments WorkFlows Resources Data Search						
Karma DB Visualisation						
Show <input type="text" value="10"/> entries				Search: <input type="text"/>		
Workflow Description ^	Workflow ID ^	Experiment Description ^	Experiment ID ^	User ^	Start ^	End ^
No Description	urn:tool:gush:8fd010b7-4391-46da-93b6-62f204b4f0b2	Twister	ark:/99999/fk4sx6p48	chsmall	Tue Feb 21 00:31:18 2012	Tue Feb 21 01:31:18 2012
No Description	urn:tool:gush:ccb0457c-e183-497f-8abf-1ed296cb4d41	Twister	ark:/99999/fk4sx6p48	chsmall	Tue Feb 21 00:31:18 2012	Tue Feb 21 01:31:18 2012
Showing 1 to 2 of 2 entries						First Previous 1 Next Last

Karma OPM Workflow





☐ Toggle Edge Labels

☐ Time Window

↶

↷

↵

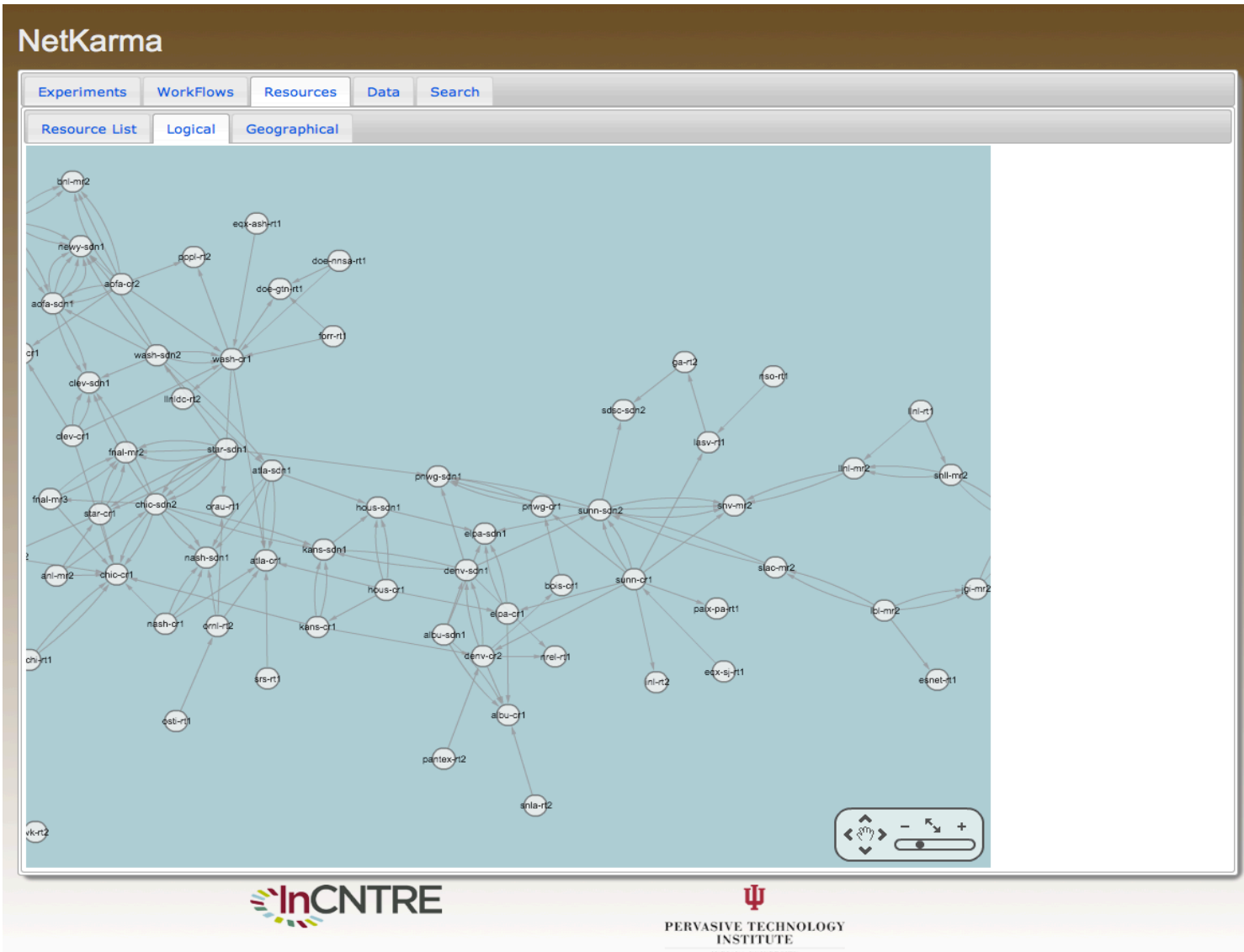
↶

↷

-

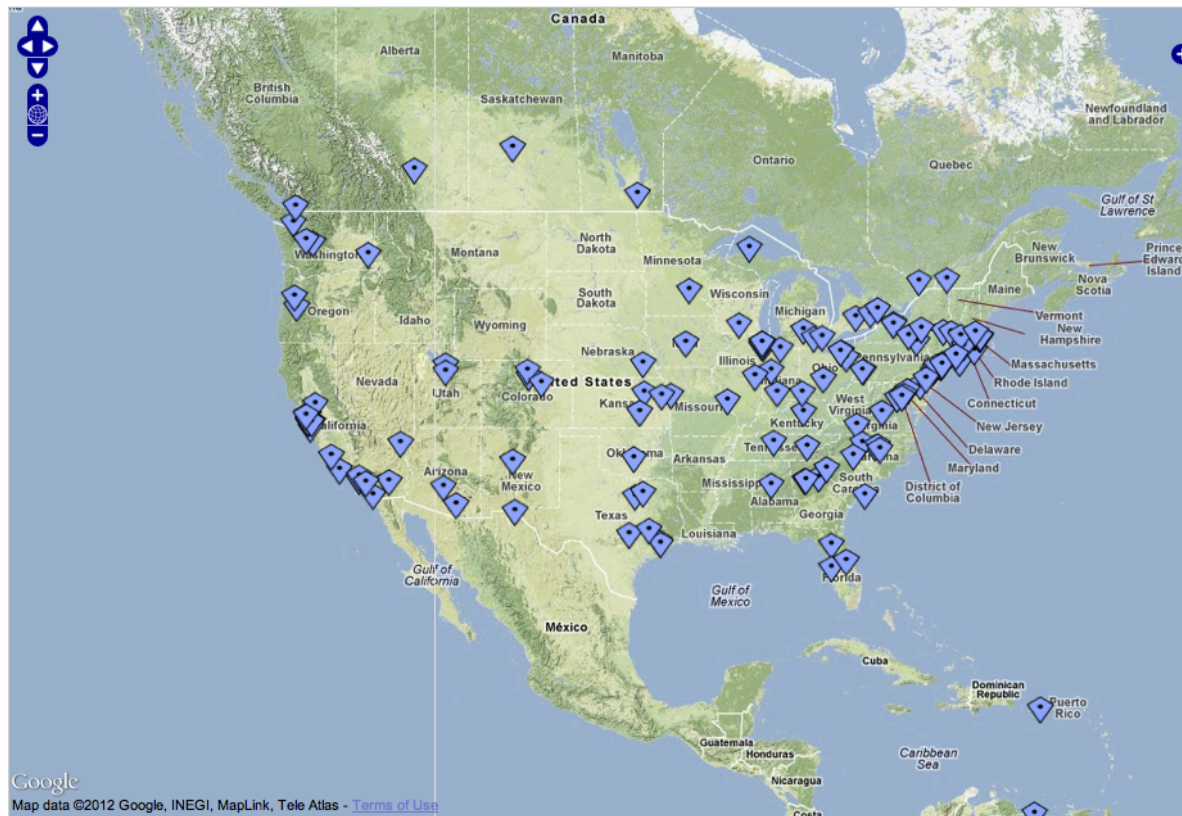
+

NMWG/UNIS topology



Geographic topology representation with status from GMOC

NetKarma Geographical Visualization

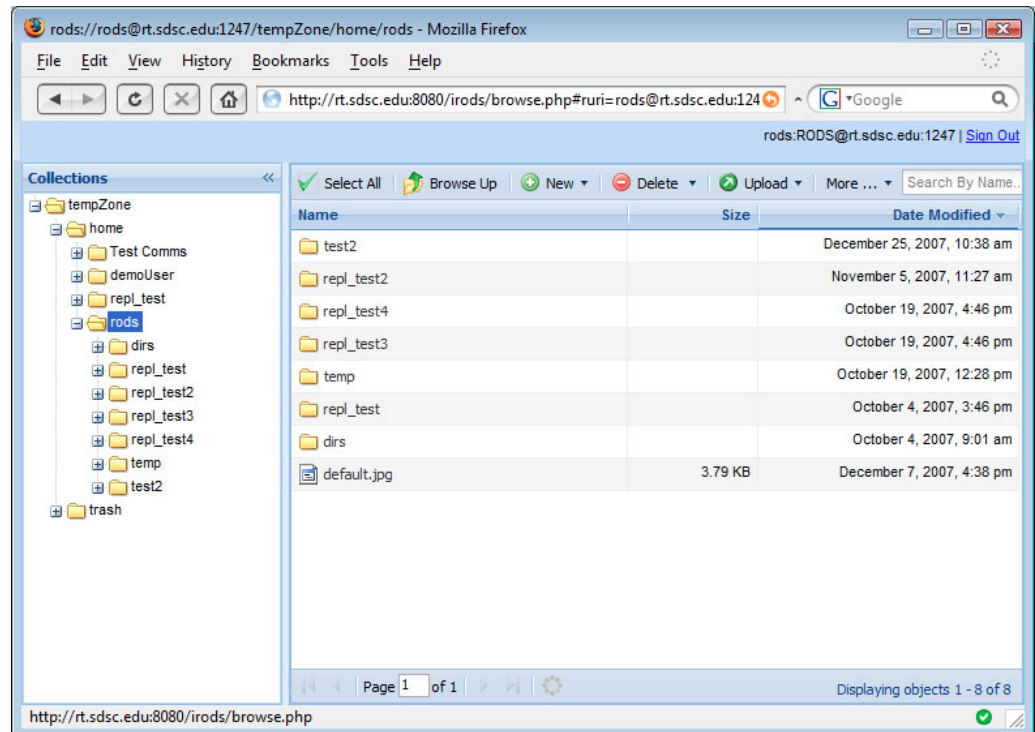


Archival service

- All data sent to the NetKarma portal
- Metadata annotations added
- Will be searchable
- Testing iRODS to store all files
 - Secondary Data Products (Karma OPM XML, GraphML Topology)
 - Metadata (MDOD)
 - Data
 - Source Code, Notes, config files, etc stored there

Data Archival Service Interfaces

- iRODS web interface
- Unix – i-commands
- iRODS explorer
- Mounted File system
- NetKarma portal?



Milestones

- Ingestion of multiple sources (GUSH, Imax, Topology files, etc.) of workflow data
- Increased usability and utility of all workflow provenance capture
- Automatic references to other sources of data
- Data ingestion with structured Metadata (MDOD) or unstructured (name/value files)
- Integration with IMF (iRODS), GMOC, and others