

Internet2 Infrastructure and Services to Support GENI Projects

Matt Zekauskas
matt@internet2.edu

GEC5
21-July-2009
Seattle, WA



Internet2 101

- It's a floor wax and a desert topping
- Membership organization, started by universities; universities, regional networks, companies are members
- A community
- Partnership working on advanced networking
- And it runs a national backbone

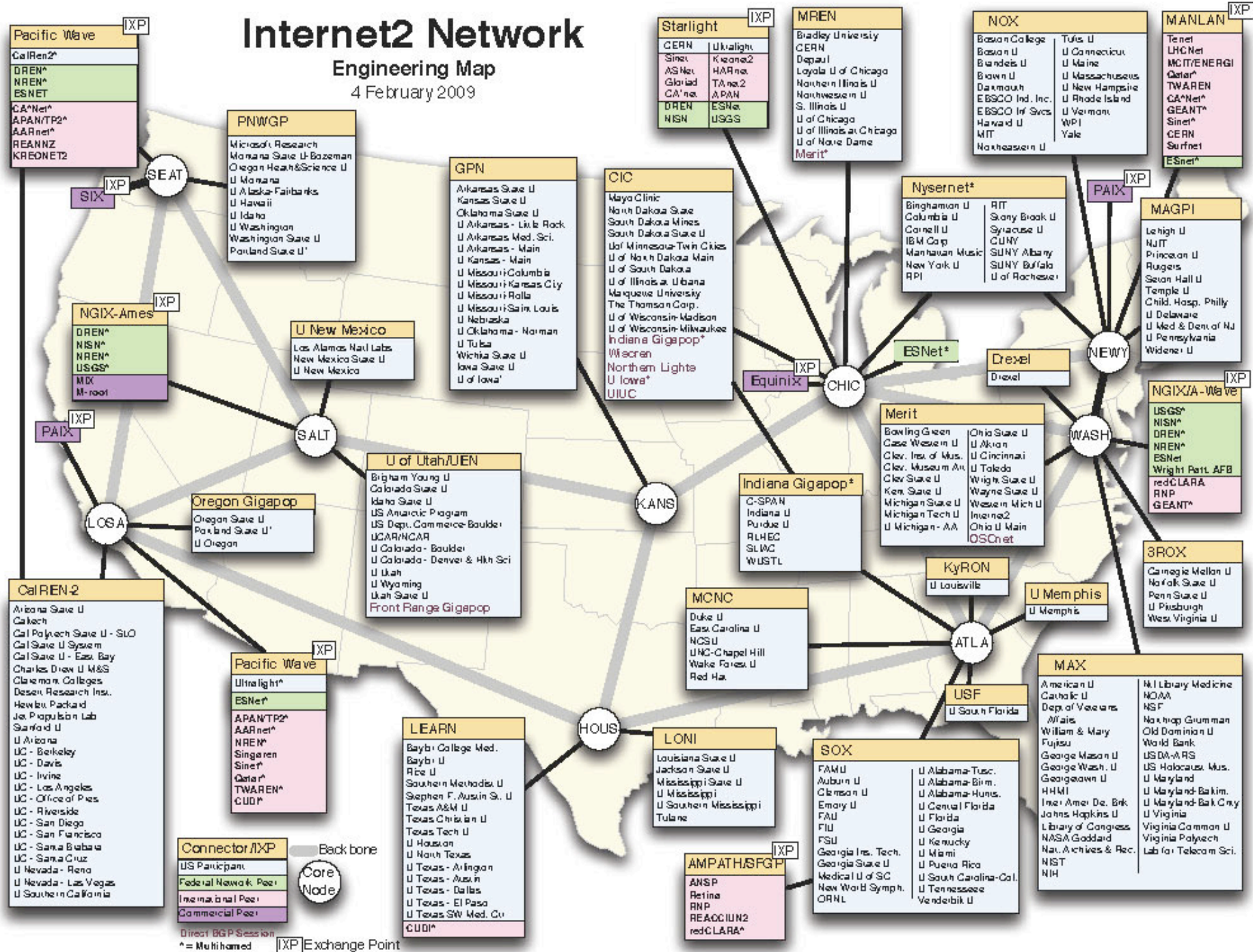
University R&E Networking

- “The Internet2 Architecture”
- Three tiered
 - Universities
 - Aggregated by Regional Networks
nee “gigaPoPs”, also Regional Optical Networks
 - Connected by national backbone(s) [one of which is operated by Internet2, the Internet2 Network.]
- Peering at R&E Exchange Points

Internet2 Network

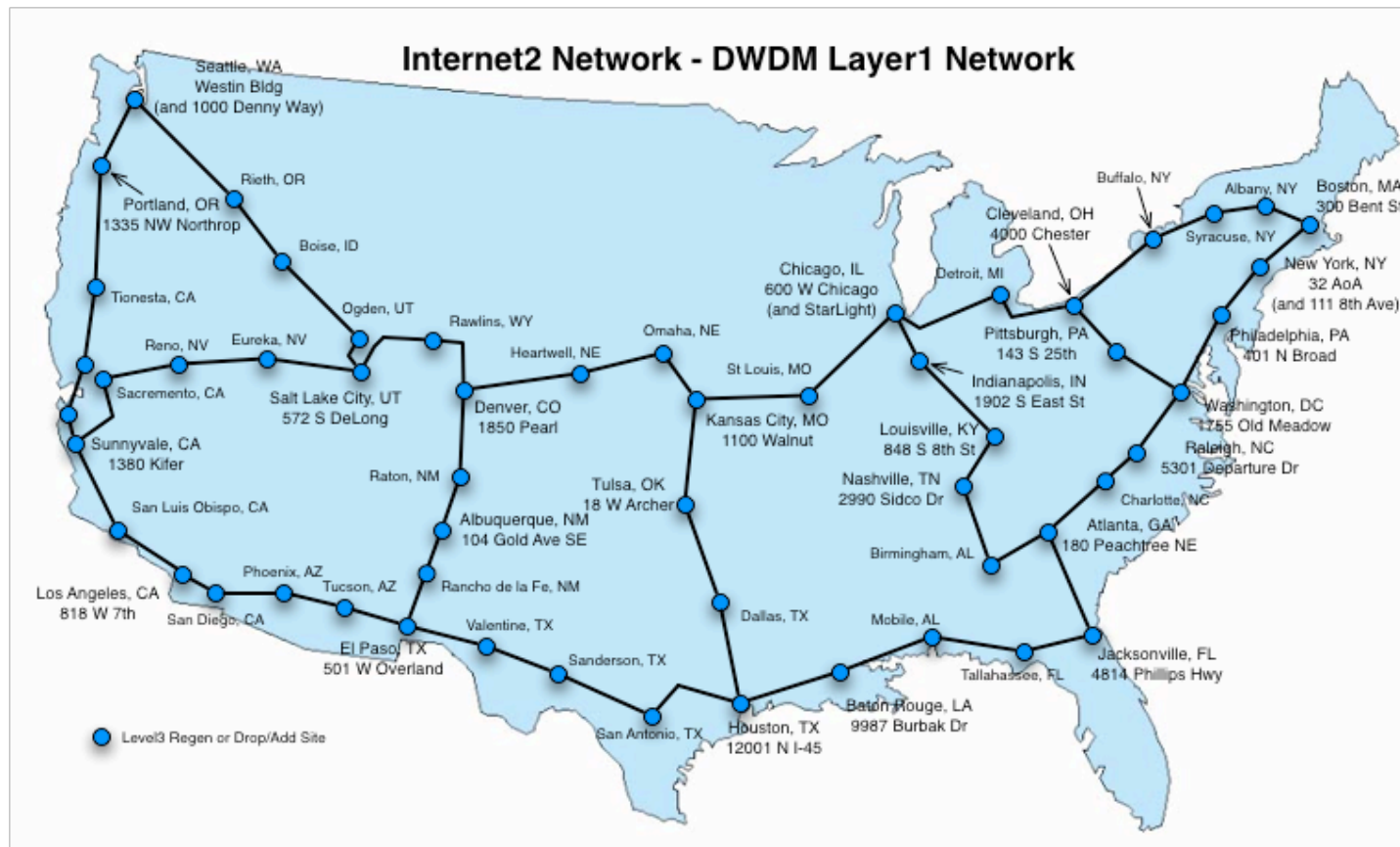
Engineering Map

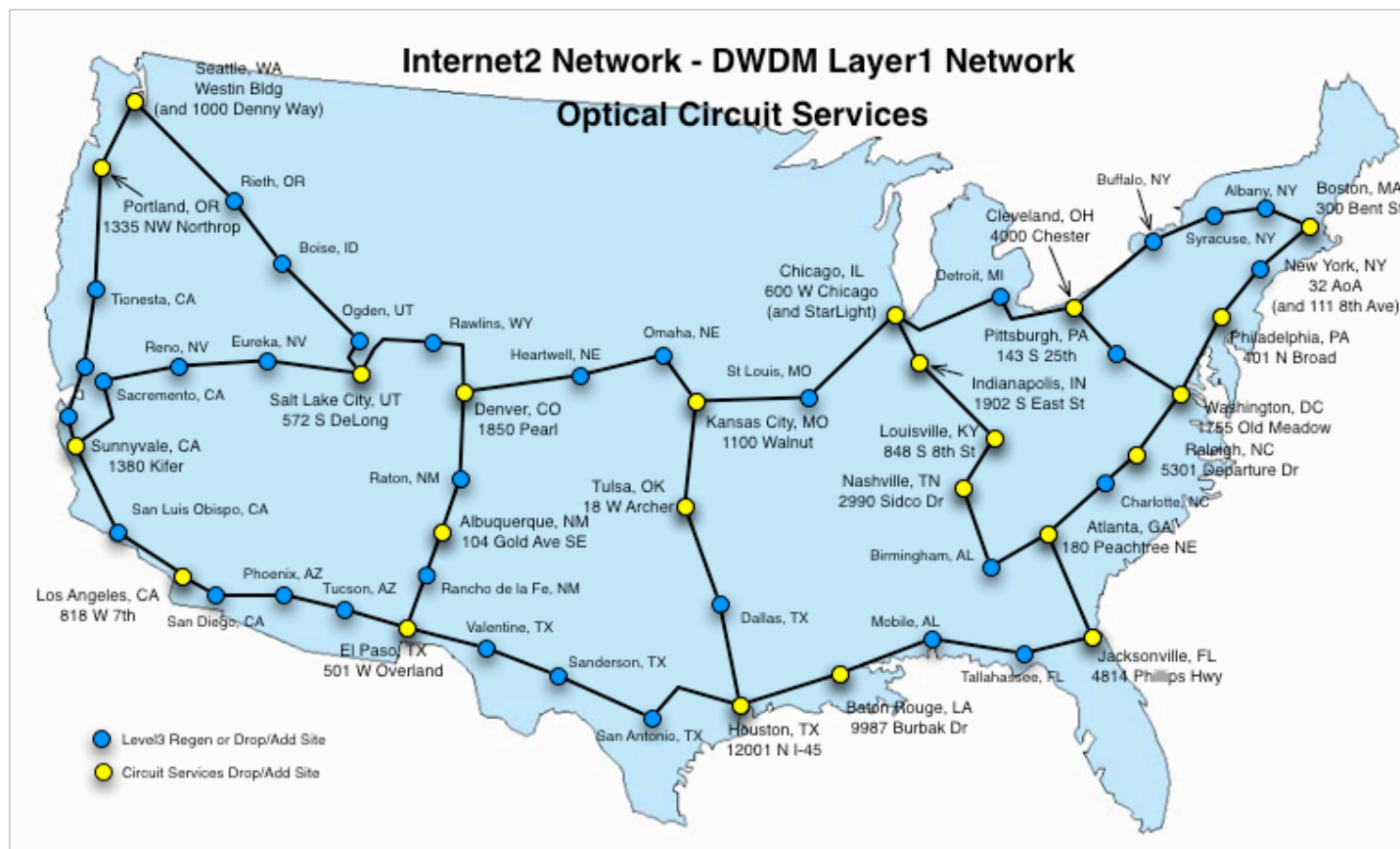
4 February 2009



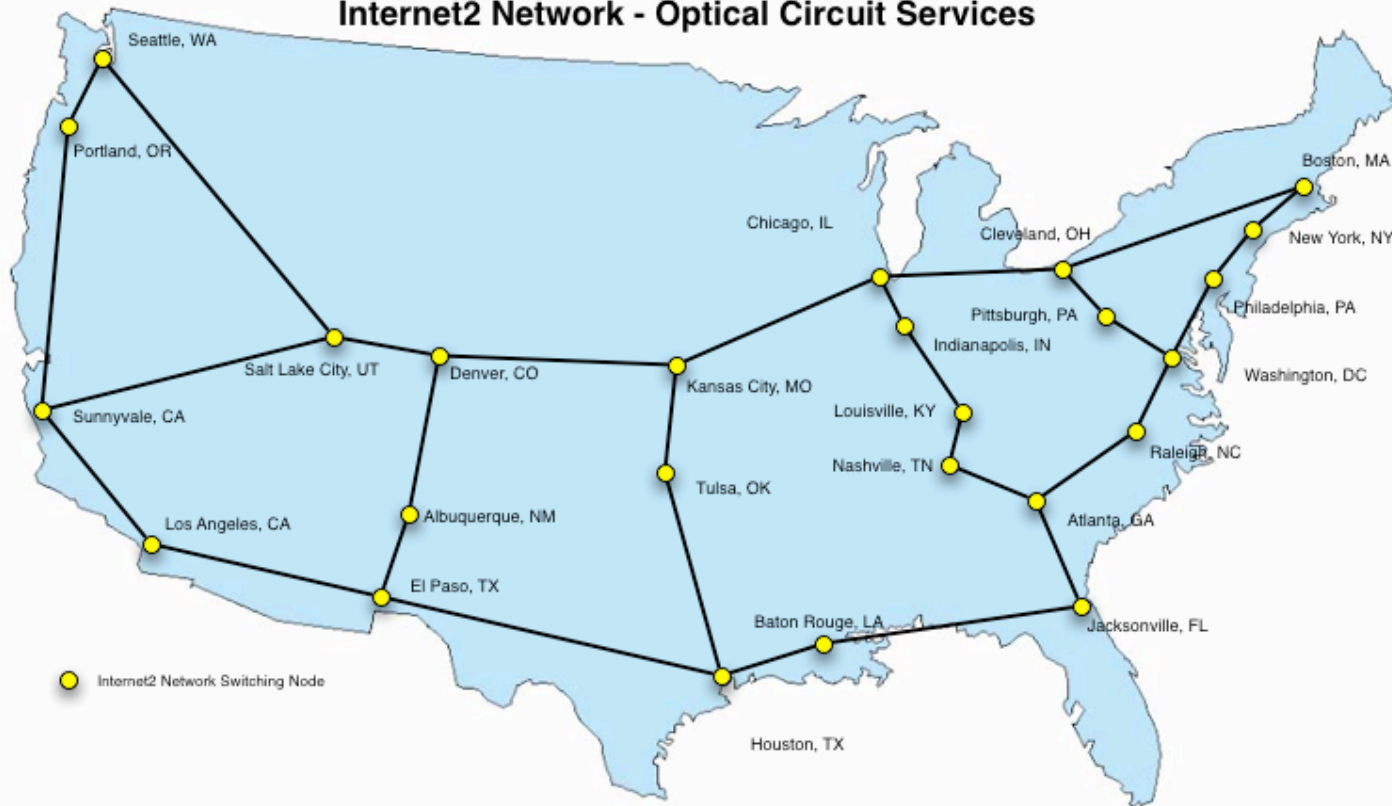
Internet2 Backbone Contribution

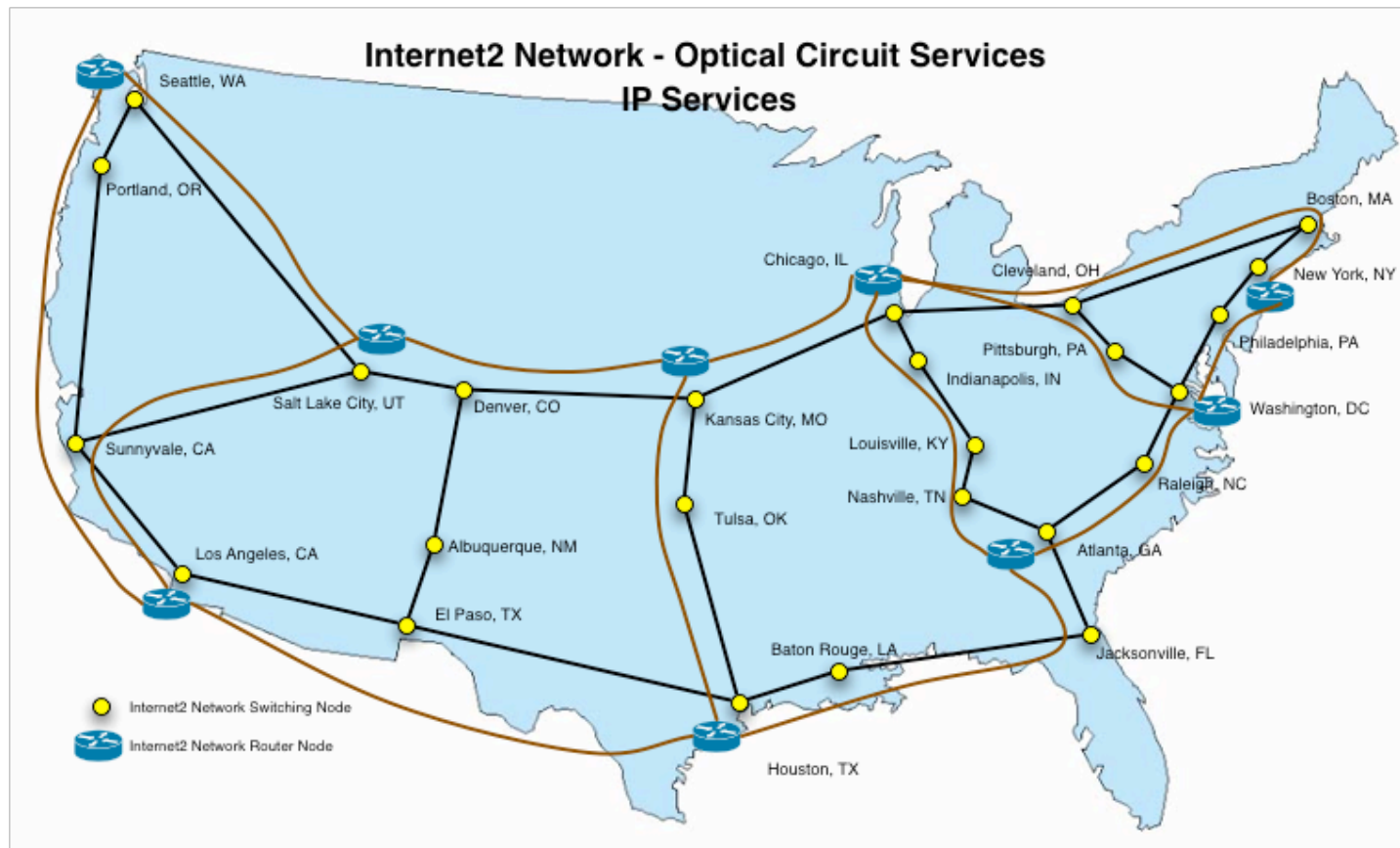
- A Dedicated 10 Gbps Wave on the Internet2 DWDM System
 - Participated with University of Utah in Spiral 1
 - Potential use by other projects whenever possible
- Access is through regional and campus networks
 - IP Network
 - Dynamic Circuit Network (DCN)
 - Direct connectivity
- Have an MoU with the GPO for use of the wave





Internet2 Network - Optical Circuit Services

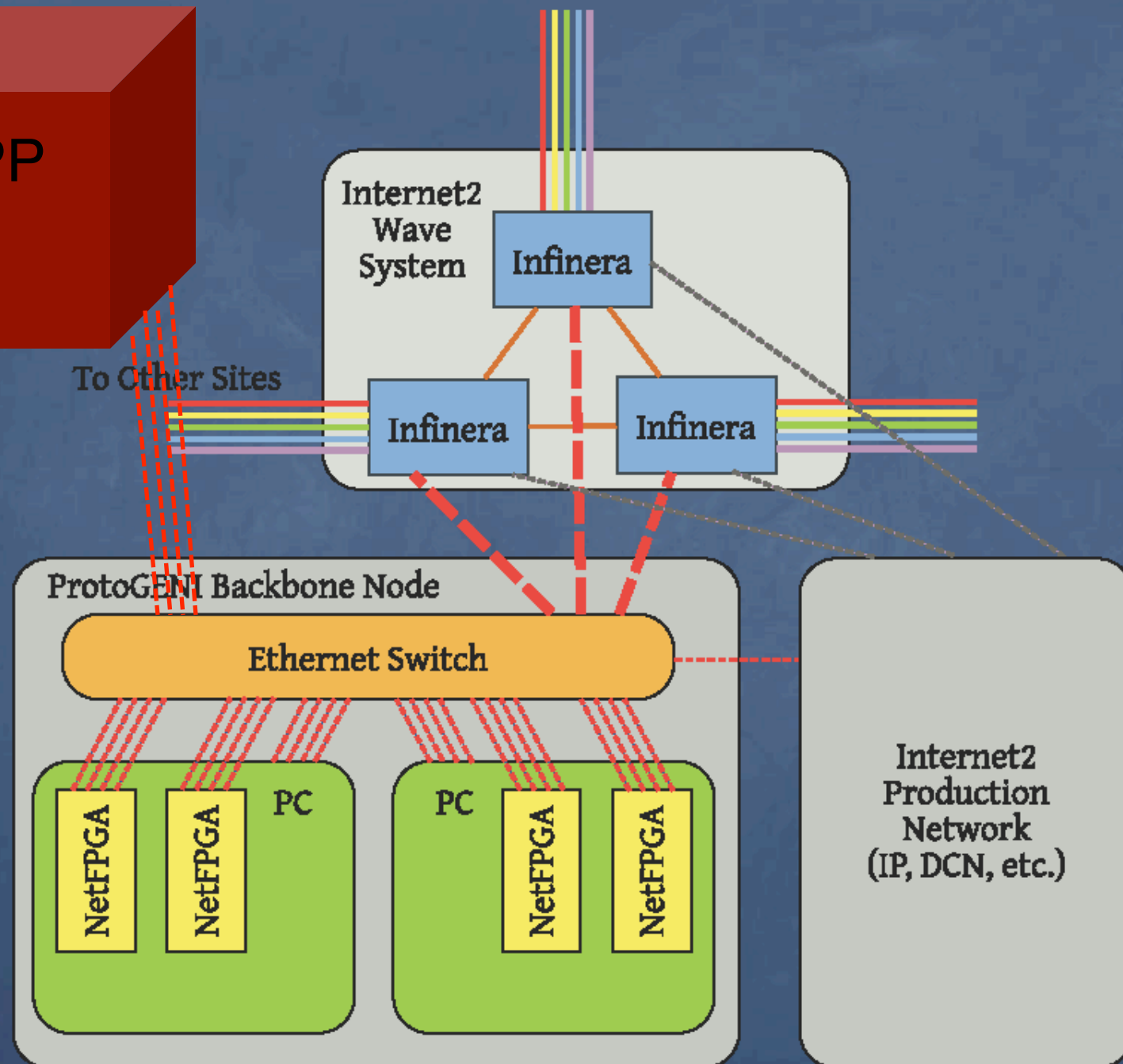




GENI using Internet2

- So far, we've been asked to
 - Host ProtoGENI in some PoPs
 - Host “Internet-scale Overlay Hosting” nodes in the same PoPs (aka “SPP”)
 - Help provide Rutgers-NICTA “layer 2” connectivity

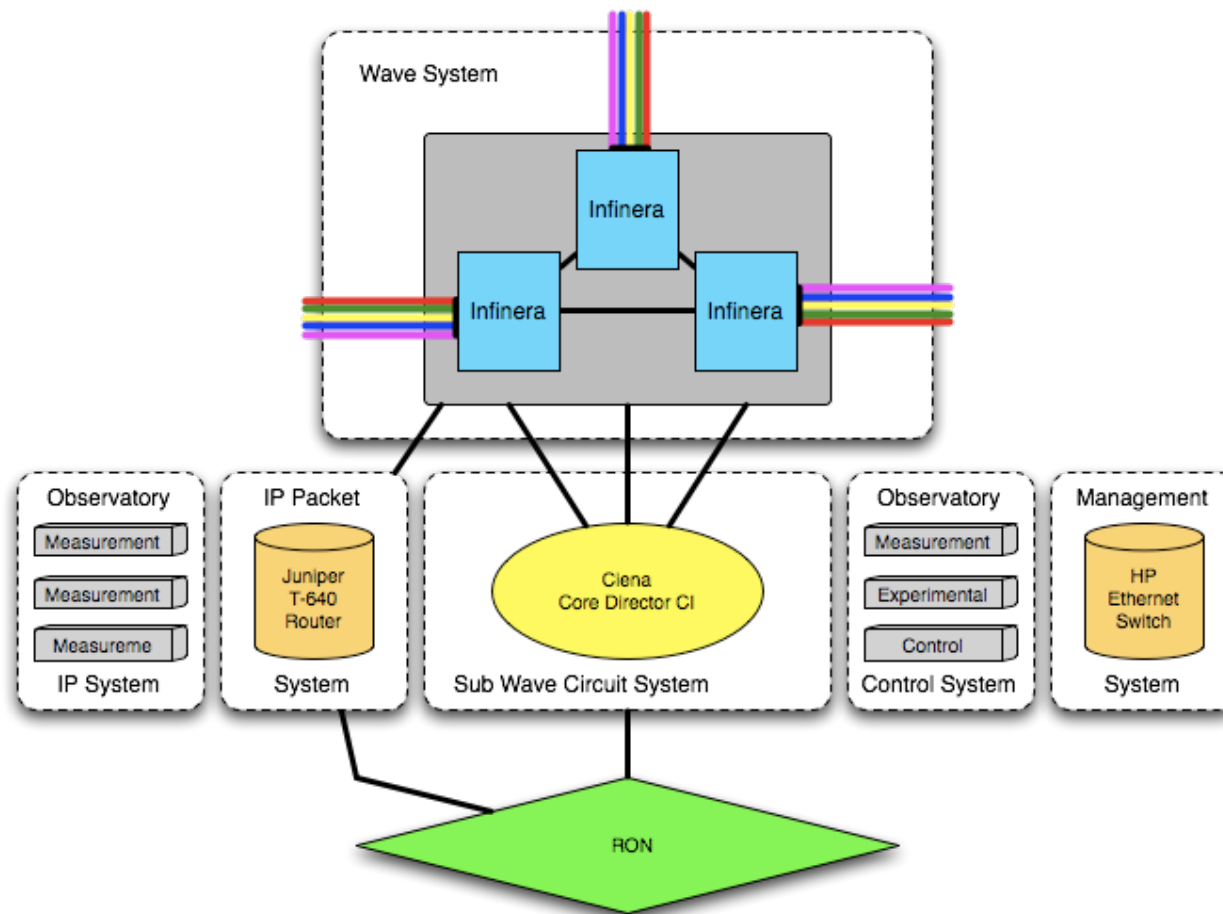
•SPP



Access possibilities

- IP. Standard layer 3, v4 or v6
- Dynamic circuit network. We (intend to) have the ability for a connector attached to DCN to be able to signal a circuit to (one or more) ProtoGENI nodes. [local and/or regional parts **do not** have to be dynamic!] (layer 2)
- Direct connection. If you can cost-effectively reach a node, plug in.

Nodes



Other Services

- Collocation Services
 - Internet2 backbone nodes
 - Depends on availability of power and space
 - Geographically diverse set of nodes
- Access to Internet2 Observatory
 - Data collection mechanisms
 - Test points
- Support in connecting to backbone
 - Working with RON and campuses to facilitate connectivity

Internet2 Observatory

- Collocation for network research projects
 - PlanetLab / VINI nodes at Router Nodes
 - 100x100 nodes (NetFPGA) nodes
- Data collections
 - Routing, Netflow, Latency, Bandwidth, Usage, Router, Logging

www.internet2.edu

Questions?

matt@internet2.edu



Current DCN Connectors

- CENIC
- CIC-Omnipop
- GPN
- LEARN
- LONI
- MAX
- MERIT
- NOX
- NYSERnet
- PNWGP
- UEN

DCN and “ION”

- Part of DCN is being “product-ized” and branded as “ION” (doesn’t stand for anything).
- The ability for connectors to easily create VLANs among each other using a web interface
- Mainly FYI